

DOWNTOWN
NEW ALAMEIN

TABLE OF CONTENTS



- 01** ABOUT CITY EDGE DEVELOPMENTS
- 02** ABOUT NEW ALAMEIN
- 03** ABOUT DOWNTOWN
- 04** LOCATION MAPS & MASTERPLAN
- 05** PROJECT AMENITIES
- 06** MAIN PIAZZA
- 07** PRIME COMMERCIAL & RETAIL SPACES
- 08** COMMERCIAL FLOOR PLANS
- 09** RESIDENTIAL FLOOR PLANS
- 10** RESIDENTIAL AMENITIES & FINISHING SPECS

CITY EDGE DEVELOPMENTS

City Edge Developments is Egypt's National leading real estate developer and development manager. The company is established between New Urban Communities Authority (NUCA) and Housing and Development Bank (HDB).

City Edge Developments develops and manages the development of high-end real estate projects. In addition to a diversified land bank for third-party accounts containing indirect real estate holdings under their management that span a range of investments across all asset classes including residential, hospitality, retail, office and education.





NEW ALAMEIN CITY

The New Alamein City, taking up more than 48,000 feddans of land will change our perception of the North Coast experience from a temporary visiting spot to an all-year round destination.

The fourth generation self-sustainable city will beat to a modern rhythm suitable for aspiring individuals to live a well-balanced life with its parks, schools, universities, hospitals, commercial and retail areas.

The city is planned to accommodate more than 3 million people by 2030.

ABOUT NEW ALAMEIN DOWNTOWN

BY BRINGING DOWNTOWN TO NEW ALAMEIN CITY,
ALL YOU NEED WILL JUST BE A WALKING DISTANCE.



Downtown New Alamein is the City's latest launch, offering residential units in mixed use buildings while being one of the central commercial and entertainment hubs of the sea area. Bringing high vibrant fully-finished residential units with a wide variety of areas starting from 110m to 330m accompanied by retail units that bring dynamic lifestyle and create an integrated community for our homeowners. Along with project amenities that serve the destination with an incomparable view and location.



Disclaimer.

1. These renders are for illustrative purposes only; Minor changes are applicable as per actual Master planning design, construction, constructed units and to the CADs. Please refer to the site and to the CADs According to the third and sixth clauses. 2. Floor plans layout and furniture plans are for indicative purposes. 3. Please refer to the inventory list, CADs and actual constructed units for areas and areas details. Rendered areas details are based on averages and may vary per unit. 4. Diagrams are not to scale. 5. Room dimensions are consistent with structural elements and do not include wall finishes or additional construction. 6. Exact specifications and details vary between each unit. For exact technical details, please refer to the contract. 7. Reserving the right to make minor alterations to the drawings added or deducted from areas& values According to the third and sixth clauses.

An aerial photograph of a beach with clear, turquoise water. The water's surface is textured with ripples and reflections, creating a shimmering effect. The sandy beach is visible at the top and bottom edges of the frame. The overall color palette is dominated by shades of blue and green, with the white sand providing a stark contrast.

LOCATION MAPS & MASTERPLAN

THE LOCATION

Cairo	261 km
Alexandria	107 km
Marsa Matrouh	184 km
Alamein International Airport	54 km
Borg El Arab International Airport	89 km



Disclaimer.

1. These renders are for illustrative purposes only; Minor changes are applicable as per actual Master planning design, construction, constructed units and to the CADs. Please refer to the site and to the CADs According to the third and sixth clauses. 2. Floor plans layout and furniture plans are for indicative purposes. 3. Please refer to the inventory list, CADs and actual constructed units for areas and areas details. Rendered areas details are based on averages and may vary per unit. 4. Diagrams are not to scale. 5. Room dimensions are consistent with structural elements and do not include wall finishes or additional construction. 6. Exact specifications and details vary between each unit. For exact technical details, please refer to the contract. 7. Reserving the right to make minor alterations to the drawings added or deducted from areas& values According to the third and sixth clauses.



The Gate Towers & Lagoons
8 Mins Away

Regal Heights Towers & Hotel
6 Mins Away

North Coast International Road
1 Mins Away

Marina 7
5 Mins Away

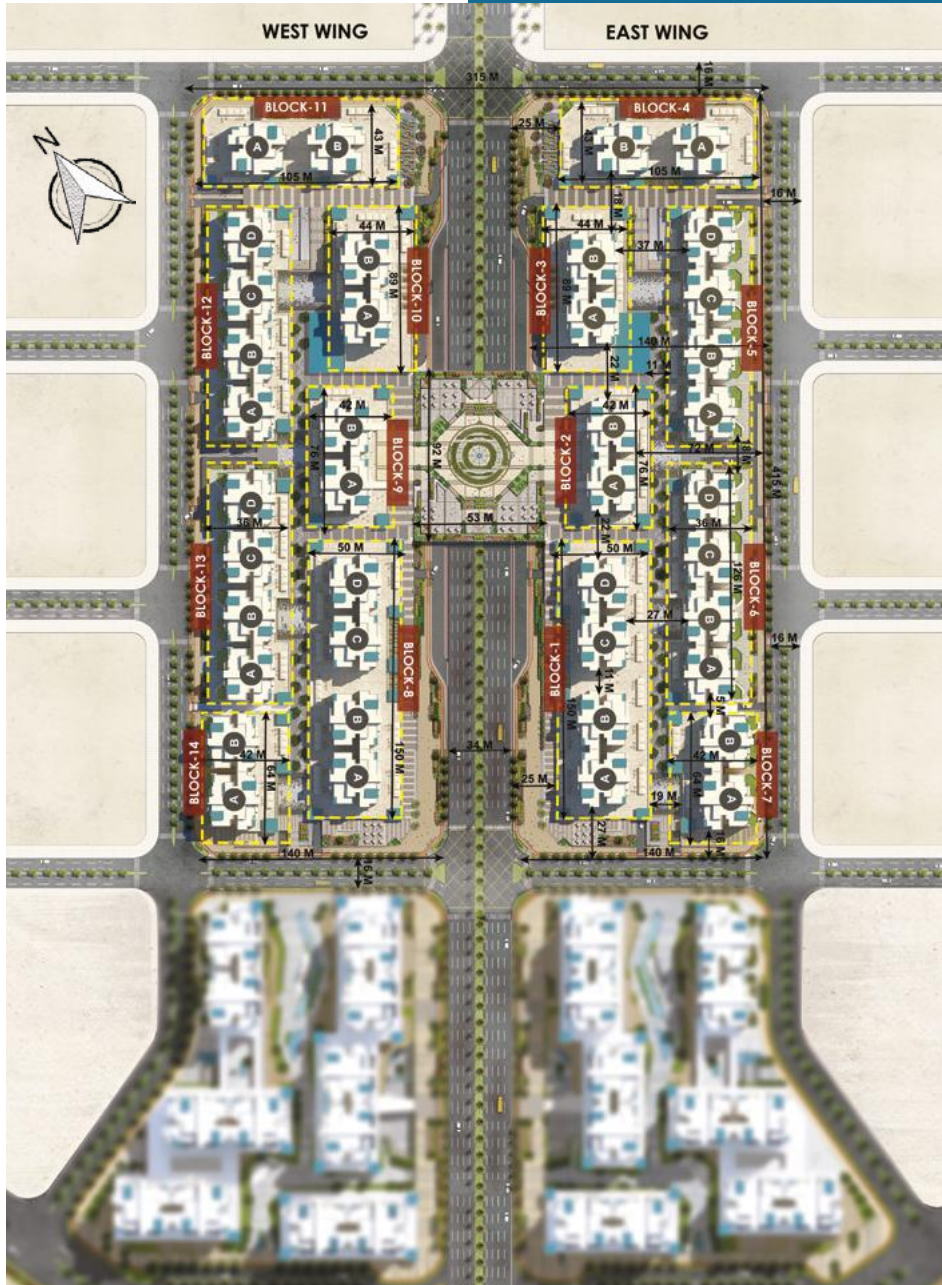
Arab Academy University
10 Mins Away

Alamein International University
15 Mins Away



Disclaimer.

1. These renders are for illustrative purposes only; Minor changes are applicable as per actual Master planning design, construction, constructed units and to the CADs. Please refer to the site and to the CADs According to the third and sixth clauses. 2. Floor plans layout and furniture plans are for indicative purposes. 3. Please refer to the inventory list, CADs and actual constructed units for areas and areas details. Rendered areas details are based on averages and may vary per unit. 4. Diagrams are not to scale. 5. Room dimensions are consistent with structural elements and do not include wall finishes or additional construction. 6. Exact specifications and details vary between each unit. For exact technical details, please refer to the contract. 7. Reserving the right to make minor alterations to the drawings added or deducted from areas& values According to the third and sixth clauses.



MASTER PLAN

Destined to be an integrated hub, Downtown includes both residential and commercial units. It offers 28 different unit types ranging from 1-bedroom to 4-bedroom apartments. With ready-to-deliver units, the project will consist of 1,320 fully finished units split over 40 buildings.

Disclaimer.

1. These renders are for illustrative purposes only; Minor changes are applicable as per actual Master planning design, construction, constructed units and to the CADs. Please refer to the site and to the CADs According to the third and sixth clauses. 2. Floor plans layout and furniture plans are for indicative purposes. 3. Please refer to the inventory list, CADs and actual constructed units for areas and areas details. Rendered areas details are based on averages and may vary per unit. 4. Diagrams are not to scale. 5. Room dimensions are consistent with structural elements and do not include wall finishes or additional construction. 6. Exact specifications and details vary between each unit. For exact technical details, please refer to the contract. 7. Reserving the right to make minor alterations to the drawings added or deducted from areas & values According to the third and sixth clauses.

PROJECT AMENITIES



RETAIL AND COMMERCIAL SPACES



2 HEALTH CLUBS



MAIN LARGE PIAZZA



BIKE LANES



UNDERGROUND PARKING



OPEN SPACES & PUBLIC LANDSCAPE



Disclaimer.

1. These renders are for illustrative purposes only; Minor changes are applicable as per actual Master planning design, construction, constructed units and to the CADs. Please refer to the site and to the CADs According to the third and sixth clauses. 2. Floor plans layout and furniture plans are for indicative purposes. 3. Please refer to the inventory list, CADs and actual constructed units for areas and areas details. Rendered areas details are based on averages and may vary per unit. 4. Diagrams are not to scale. 5. Room dimensions are consistent with structural elements and do not include wall finishes or additional construction. 6. Exact specifications and details vary between each unit. For exact technical details, please refer to the contract. 7. Reserving the right to make minor alterations to the drawings added or deducted from areas& values According to the third and sixth clauses.

MAIN PIAZZA

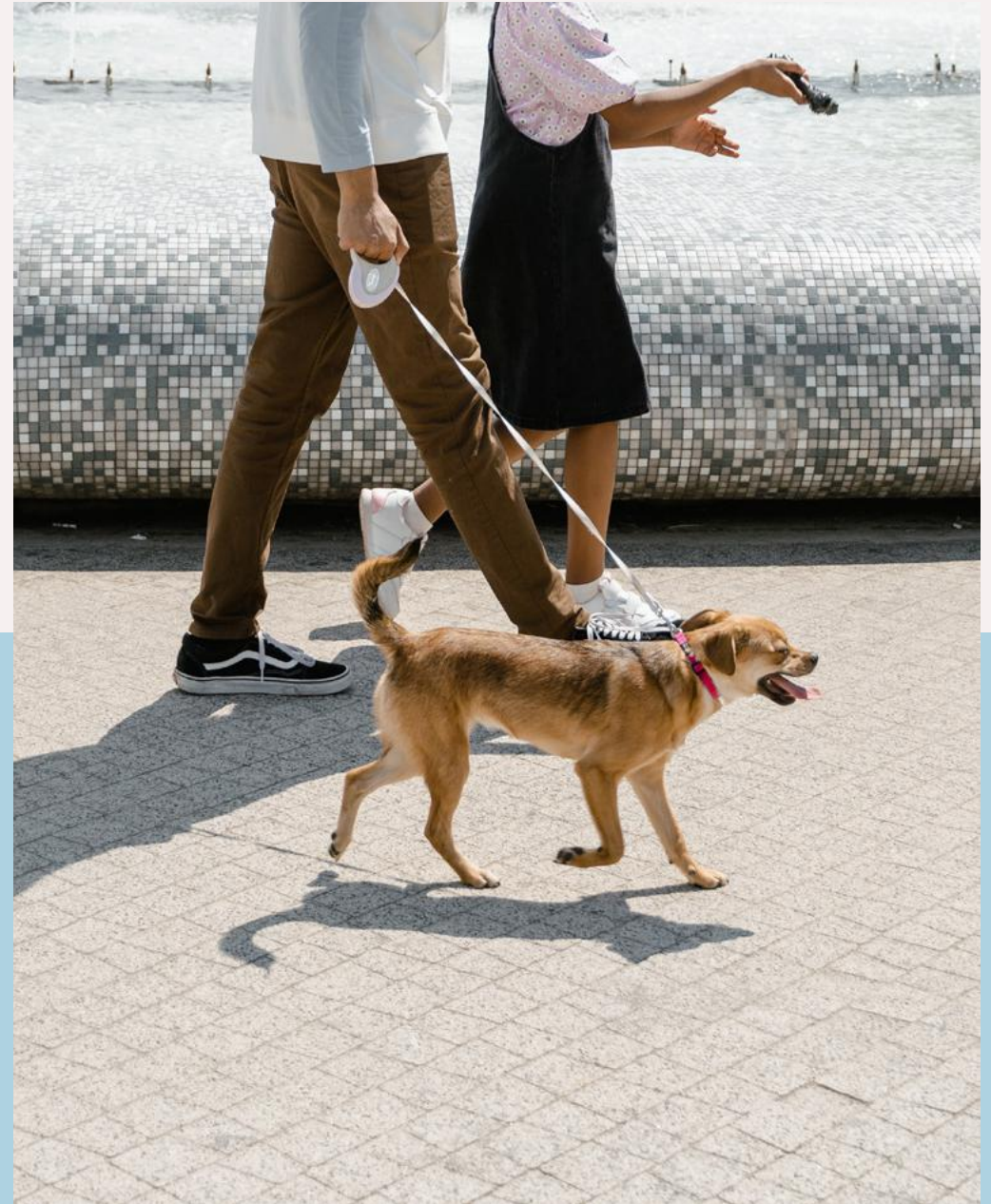


Located at the center of Downtown, the Main Piazza is the beating heart where all the main activities take place. Featuring large open spaces that allow for tranquil walks and fun gatherings with family & friends surrounded by the iconic New Alamein towers, in addition to the Spa for a time full of entertainment and joy. The dedicated kids playing area is guaranteed to keep children entertained within a safe environment.

The Piazza hosts an array of F&B outlets that cater to every taste, with easy access to multiple parking areas for maximum comfort and convenience on all levels.

Disclaimer:

1. These renders are for illustrative purposes only; Minor changes are applicable as per actual Master planning design, construction, constructed units and to the CADs. Please refer to the site and to the CADs According to the third and sixth clauses. 2. Floor plans layout and furniture plans are for indicative purposes. 3. Please refer to the inventory list, CADs and actual constructed units for areas and areas details. Rendered areas details are based on averages and may vary per unit. 4. Diagrams are not to scale. 5. Room dimensions are consistent with structural elements and do not include wall finishes or additional construction. 6. Exact specifications and details vary between each unit. For exact technical details, please refer to the contract. 7. Reserving the right to make minor alterations to the drawings added or deducted from areas& values According to the third and sixth clauses.





PRIME COMMERCIAL & RETAIL SPACES

Set strategically in New Alamein City, Downtown is close to North Coast International Road, easily reachable through all the main routes around. For the maximum privacy & convenience, all retail stores are accessible through dedicated entrances differentiated from the entrances of the residential units. With convenience in mind, the commercial units feature underground parking with direct access from the main roads.

Disclaimer.

1. These renders are for illustrative purposes only; Minor changes are applicable as per actual Master planning design, construction, constructed units and to the CADs. Please refer to the site and to the CADs According to the third and sixth clauses. 2. Floor plans layout and furniture plans are for indicative purposes. 3. Please refer to the inventory list, CADs and actual constructed units for areas and areas details. Rendered areas details are based on averages and may vary per unit. 4. Diagrams are not to scale. 5. Room dimensions are consistent with structural elements and do not include wall finishes or additional construction. 6. Exact specifications and details vary between each unit. For exact technical details, please refer to the contract. 7. Reserving the right to make minor alterations to the drawings added or deducted from areas& values According to the third and sixth clauses.

PRIME COMMERCIAL & RETAIL SPACES

Downtown offers a pedestrian experience that gives an airy ambiance, redefining walking and enjoying one's time. That is in addition to offering a wide variety of restaurants, banks, pharmacies, and retail stores, which are delivered core and shell, that match all needs and lifestyles.



Disclaimer.

1. These renders are for illustrative purposes only; Minor changes are applicable as per actual Master planning design, construction, constructed units and to the CADs. Please refer to the site and to the CADs According to the third and sixth clauses. 2. Floor plans layout and furniture plans are for indicative purposes. 3. Please refer to the inventory list, CADs and actual constructed units for areas and areas details. Rendered areas details are based on averages and may vary per unit. 4. Diagrams are not to scale. 5. Room dimensions are consistent with structural elements and do not include wall finishes or additional construction. 6. Exact specifications and details vary between each unit. For exact technical details, please refer to the contract. 7. Reserving the right to make minor alterations to the drawings added or deducted from areas& values According to the third and sixth clauses.



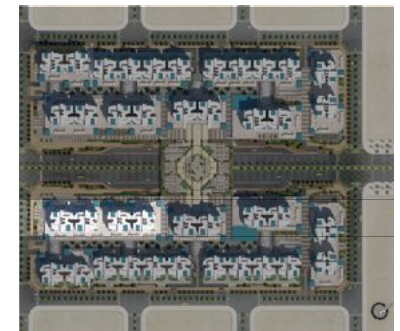
COMMERCIAL FLOOR PLANS

BLOCK 01

GROUND FLOOR



- Retail
- F&B
- Supermarket
- Bank
- Pharmacy



Disclaimer.

1. These renders are for illustrative purposes only; Minor changes are applicable as per actual Master planning design, construction, constructed units and to the CADs. Please refer to the site and to the CADs According to the third and sixth clauses. 2. Floor plans layout and furniture plans are for indicative purposes. 3. Please refer to the inventory list, CADs and actual constructed units for areas and areas details. Rendered areas details are based on averages and may vary per unit. 4. Diagrams are not to scale. 5. Room dimensions are consistent with structural elements and do not include wall finishes or additional construction. 6. Exact specifications and details vary between each unit. For exact technical details, please refer to the contract. 7. Reserving the right to make minor alterations to the drawings added or deducted from areas& values According to the third and sixth clauses.

BLOCK

02

GROUND FLOOR



Disclaimer.

1. These renders are for illustrative purposes only; Minor changes are applicable as per actual Master planning design, construction, constructed units and to the CADs. Please refer to the site and to the CADs According to the third and sixth clauses. 2. Floor plans layout and furniture plans are for indicative purposes. 3. Please refer to the inventory list, CADs and actual constructed units for areas and areas details. Rendered areas details are based on averages and may vary per unit. 4. Diagrams are not to scale. 5. Room dimensions are consistent with structural elements and do not include wall finishes or additional construction. 6. Exact specifications and details vary between each unit. For exact technical details, please refer to the contract. 7. Reserving the right to make minor alterations to the drawings added or deducted from areas& values According to the third and sixth clauses.



BLOCK

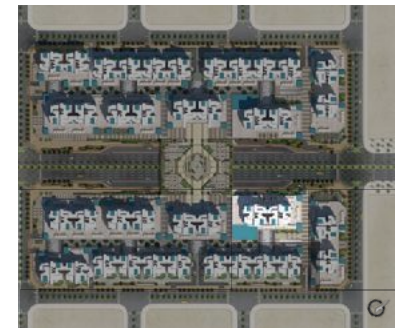
03

GROUND FLOOR



Disclaimer.

1. These renders are for illustrative purposes only; Minor changes are applicable as per actual Master planning design, construction, constructed units and to the CADs. Please refer to the site and to the CADs According to the third and sixth clauses. 2. Floor plans layout and furniture plans are for indicative purposes. 3. Please refer to the inventory list, CADs and actual constructed units for areas and areas details. Rendered areas details are based on averages and may vary per unit. 4. Diagrams are not to scale. 5. Room dimensions are consistent with structural elements and do not include wall finishes or additional construction. 6. Exact specifications and details vary between each unit. For exact technical details, please refer to the contract. 7. Reserving the right to make minor alterations to the drawings added or deducted from areas& values According to the third and sixth clauses.

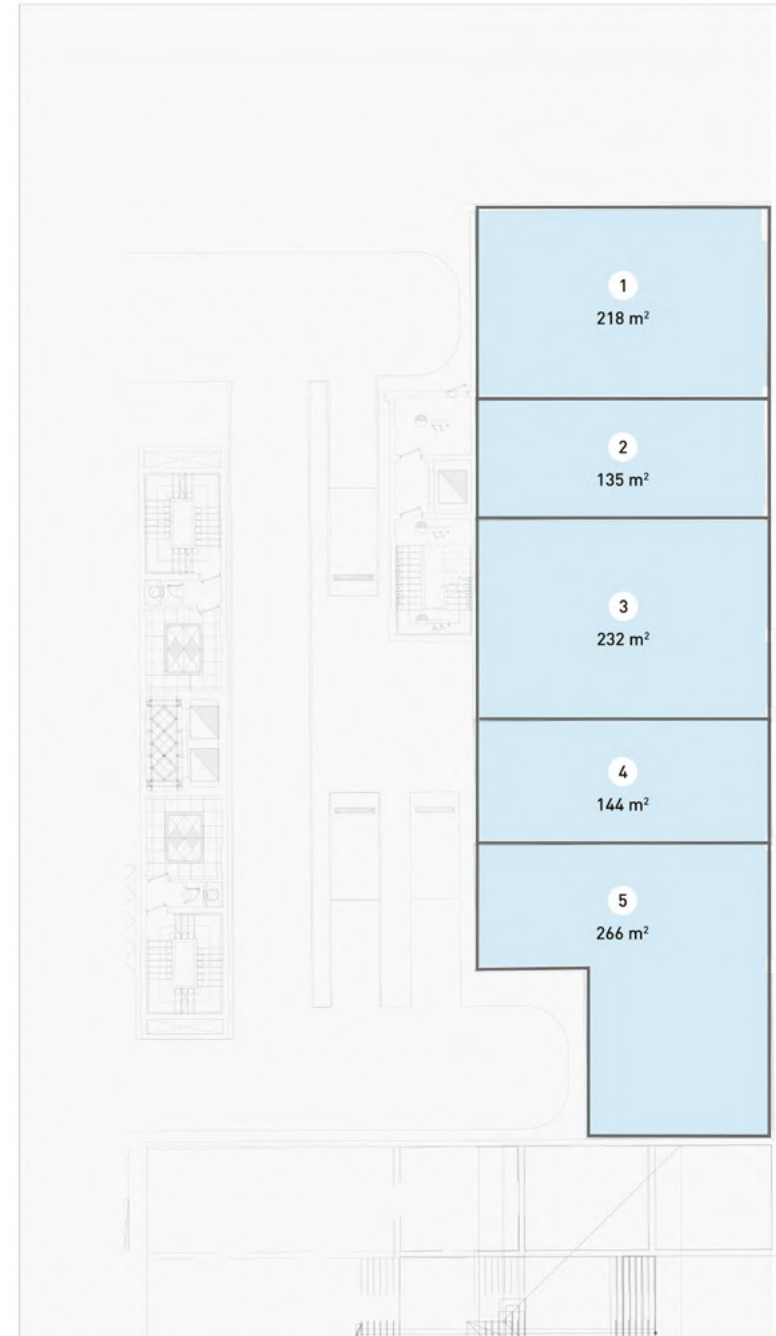


BLOCK

03

LOWER GROUND

- Retail
- F&B
- Supermarket
- Bank
- Pharmacy



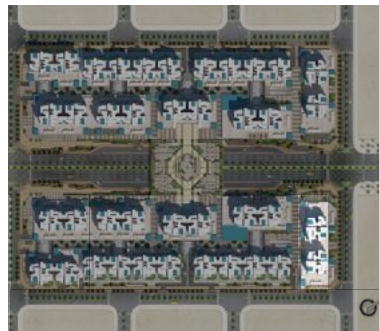
Disclaimer.

1. These renders are for illustrative purposes only; Minor changes are applicable as per actual Master planning design, construction, constructed units and to the CADs. Please refer to the site and to the CADs According to the third and sixth clauses. 2. Floor plans layout and furniture plans are for indicative purposes. 3. Please refer to the inventory list, CADs and actual constructed units for areas and areas details. Rendered areas details are based on averages and may vary per unit. 4. Diagrams are not to scale. 5. Room dimensions are consistent with structural elements and do not include wall finishes or additional construction. 6. Exact specifications and details vary between each unit. For exact technical details, please refer to the contract. 7. Reserving the right to make minor alterations to the drawings added or deducted from areas& values According to the third and sixth clauses.

BLOCK 04

GROUND FLOOR

- Retail
- F&B
- Supermarket
- Bank
- Pharmacy



Disclaimer.

1. These renders are for illustrative purposes only; Minor changes are applicable as per actual Master planning design, construction, constructed units and to the CADs. Please refer to the site and to the CADs According to the third and sixth clauses. 2. Floor plans layout and furniture plans are for indicative purposes. 3. Please refer to the inventory list, CADs and actual constructed units for areas and areas details. Rendered areas details are based on averages and may vary per unit. 4. Diagrams are not to scale. 5. Room dimensions are consistent with structural elements and do not include wall finishes or additional construction. 6. Exact specifications and details vary between each unit. For exact technical details, please refer to the contract. 7. Reserving the right to make minor alterations to the drawings added or deducted from areas& values According to the third and sixth clauses.

BLOCK 05

GROUND FLOOR



Disclaimer.

1. These renders are for illustrative purposes only; Minor changes are applicable as per actual Master planning design, construction, constructed units and to the CADs. Please refer to the site and to the CADs According to the third and sixth clauses. 2. Floor plans layout and furniture plans are for indicative purposes. 3. Please refer to the inventory list, CADs and actual constructed units for areas and areas details. Rendered areas details are based on averages and may vary per unit. 4. Diagrams are not to scale. 5. Room dimensions are consistent with structural elements and do not include wall finishes or additional construction. 6. Exact specifications and details vary between each unit. For exact technical details, please refer to the contract. 7. Reserving the right to make minor alterations to the drawings added or deducted from areas& values According to the third and sixth clauses.

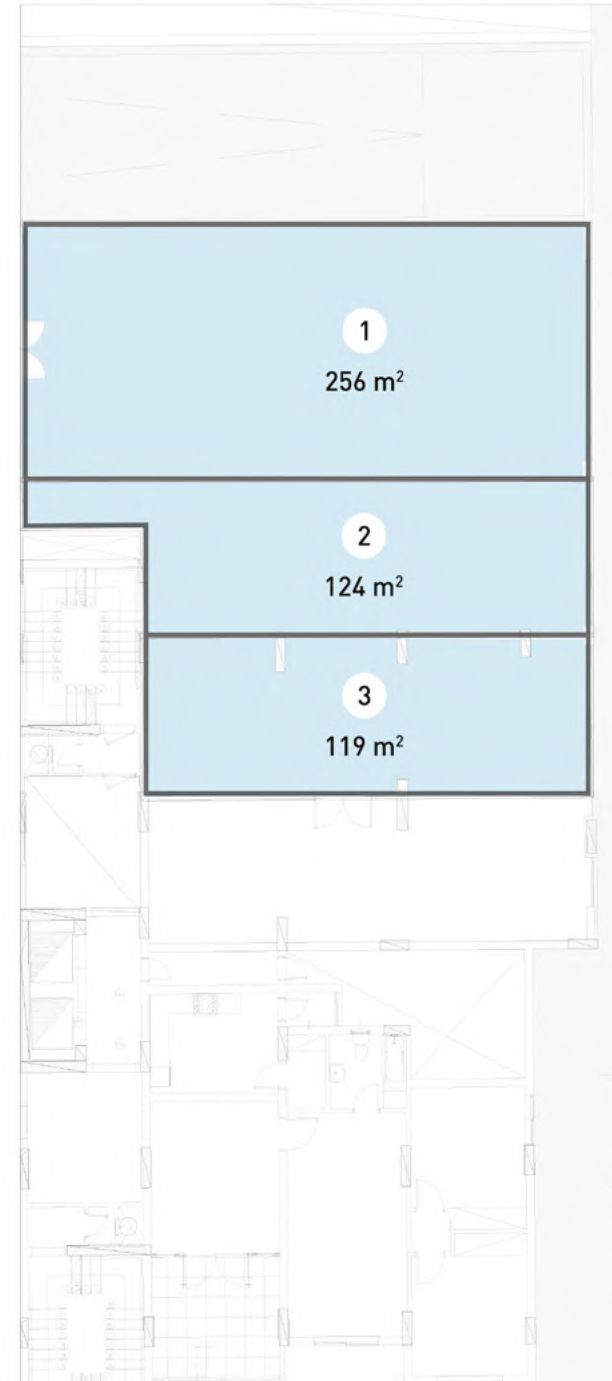
- Retail
- F&B
- Supermarket
- Bank
- Pharmacy



BLOCK 05

LOWER GROUND

- Retail
- F&B
- Supermarket
- Bank
- Pharmacy



Disclaimer.

1. These renders are for illustrative purposes only; Minor changes are applicable as per actual Master planning design, construction, constructed units and to the CADs. Please refer to the site and to the CADs According to the third and sixth clauses. 2. Floor plans layout and furniture plans are for indicative purposes. 3. Please refer to the inventory list, CADs and actual constructed units for areas and areas details. Rendered areas details are based on averages and may vary per unit. 4. Diagrams are not to scale. 5. Room dimensions are consistent with structural elements and do not include wall finishes or additional construction. 6. Exact specifications and details vary between each unit. For exact technical details, please refer to the contract. 7. Reserving the right to make minor alterations to the drawings added or deducted from areas& values According to the third and sixth clauses.

BLOCK

06

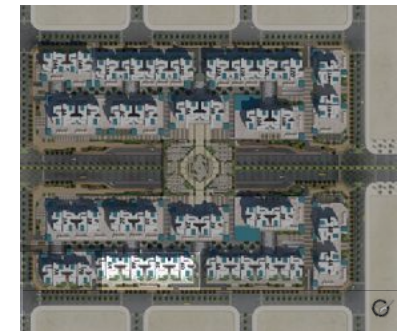
GROUND FLOOR



Disclaimer.

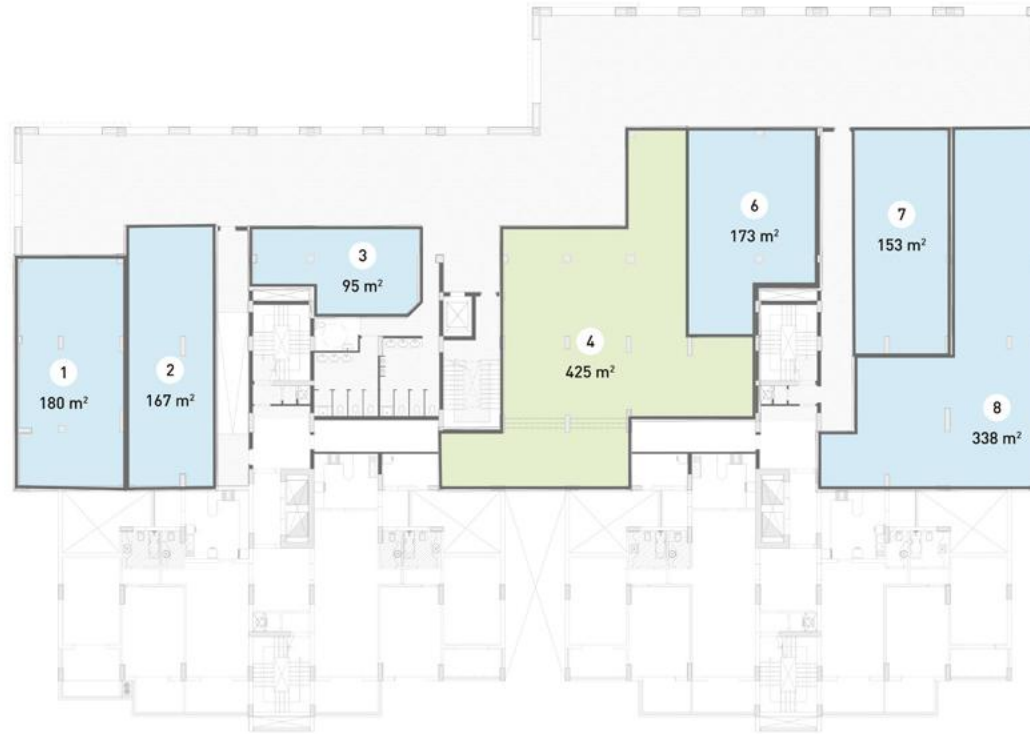
1. These renders are for illustrative purposes only; Minor changes are applicable as per actual Master planning design, construction, constructed units and to the CADs. Please refer to the site and to the CADs According to the third and sixth clauses. 2. Floor plans layout and furniture plans are for indicative purposes. 3. Please refer to the inventory list, CADs and actual constructed units for areas and areas details. Rendered areas details are based on averages and may vary per unit. 4. Diagrams are not to scale. 5. Room dimensions are consistent with structural elements and do not include wall finishes or additional construction. 6. Exact specifications and details vary between each unit. For exact technical details, please refer to the contract. 7. Reserving the right to make minor alterations to the drawings added or deducted from areas& values According to the third and sixth clauses.

-  Retail
-  F&B
-  Supermarket
-  Bank
-  Pharmacy



BLOCK 07

GROUND FLOOR



Disclaimer.

1. These renders are for illustrative purposes only; Minor changes are applicable as per actual Master planning design, construction, constructed units and to the CADs. Please refer to the site and to the CADs According to the third and sixth clauses. 2. Floor plans layout and furniture plans are for indicative purposes. 3. Please refer to the inventory list, CADs and actual constructed units for areas and areas details. Rendered areas details are based on averages and may vary per unit. 4. Diagrams are not to scale. 5. Room dimensions are consistent with structural elements and do not include wall finishes or additional construction. 6. Exact specifications and details vary between each unit. For exact technical details, please refer to the contract. 7. Reserving the right to make minor alterations to the drawings added or deducted from areas& values According to the third and sixth clauses.





RESIDENTIAL FLOOR PLANS

1 BEDROOM

TYPE

03 - GARDEN UNIT

Area – 111m²

1 BEDROOM

1.	Reception & Dining Room	3.67 x 6.70
2.	Bedroom	3.55 x 5.44
3.	Kitchen	2.98 x 3.95
4.	Bathroom	2.22 x 2.35
5.	Corridor 1	2.22 x 1.20
6.	Terrace 1	1.88 x 3.60
7.	Terrace 2	1.00 x 1.50
8.	Garden	6.22 x 7.45



Disclaimer.

1. These renders are for illustrative purposes only. Minor changes are applicable as per actual Master planning design, construction, constructed units and to the CADs. Please refer to the site and to the CADs According to the third and sixth clauses. 2. Floor plans layout and furniture plans are for indicative purposes. 3. Please refer to the inventory list, CADs and actual constructed units for areas and areas details. Rendered areas details are based on averages and may vary per unit. 4. Diagrams are not to scale. 5. Room dimensions are consistent with structural elements and do not include wall finishes or additional construction. 6. Exact specifications and details vary between each unit. For exact technical details, please refer to the contract. 7. Reserving the right to make minor alterations to the drawings added or deducted from areas& values According to the third and sixth clauses.

2 BEDROOMS

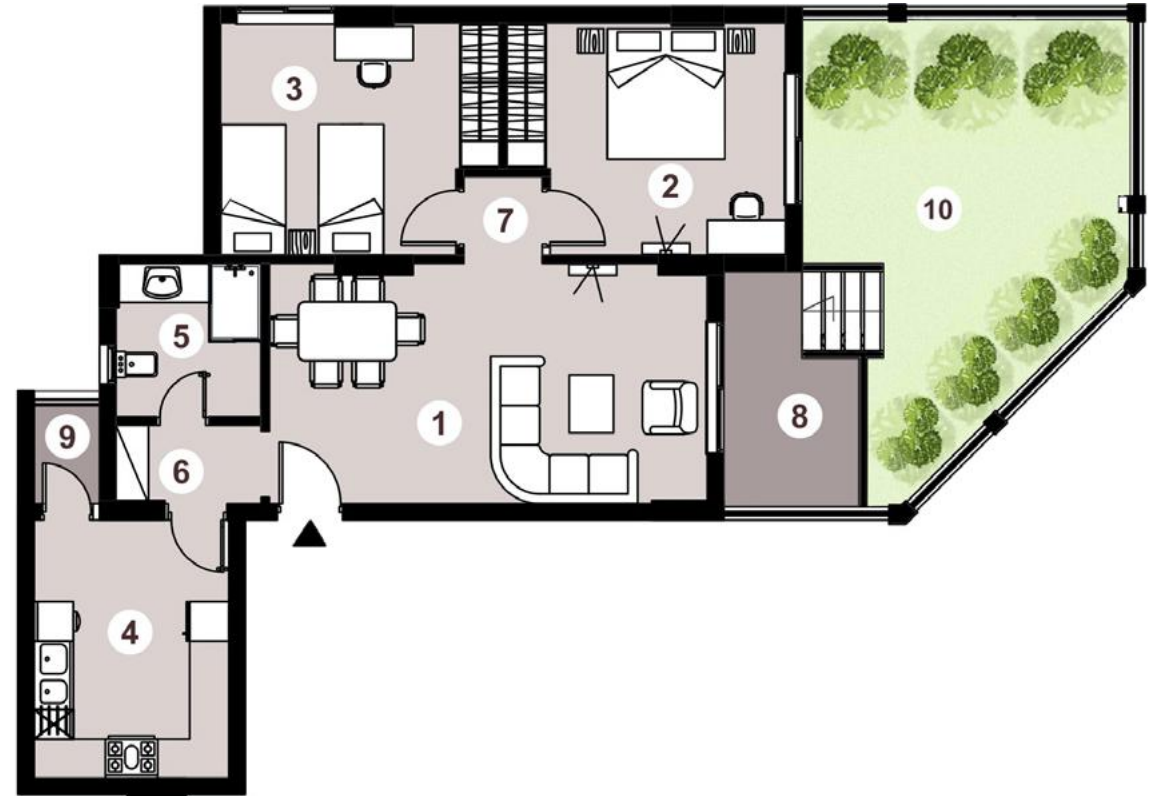
TYPE

01 - GARDEN UNIT

Area – 125m²

2 BEDROOMS

1.	Reception & Dining Room	3.67 x 6.70
2.	Bedroom 1	4.27 x 3.53
3.	Bedroom 2	4.27 x 3.53
4.	Kitchen	2.98 x 3.95
5.	Bathroom	2.22 x 2.35
6.	Corridor 1	2.22 x 1.20
7.	Corridor 2	1.24 x 1.20
8.	Terrace 1	3.59 x 2.08
9.	Terrace 2	1.00 x 1.50
10.	Garden	7.51 x 5.03



Disclaimer.

1. These renders are for illustrative purposes only. Minor changes are applicable as per actual Master planning design, construction, constructed units and to the CADs. Please refer to the site and to the CADs According to the third and sixth clauses. 2. Floor plans layout and furniture plans are for indicative purposes. 3. Please refer to the inventory list, CADs and actual constructed units for areas and areas details. Rendered areas details are based on averages and may vary per unit. 4. Diagrams are not to scale. 5. Room dimensions are consistent with structural elements and do not include wall finishes or additional construction. 6. Exact specifications and details vary between each unit. For exact technical details, please refer to the contract. 7. Reserving the right to make minor alterations to the drawings added or deducted from areas& values According to the third and sixth clauses.

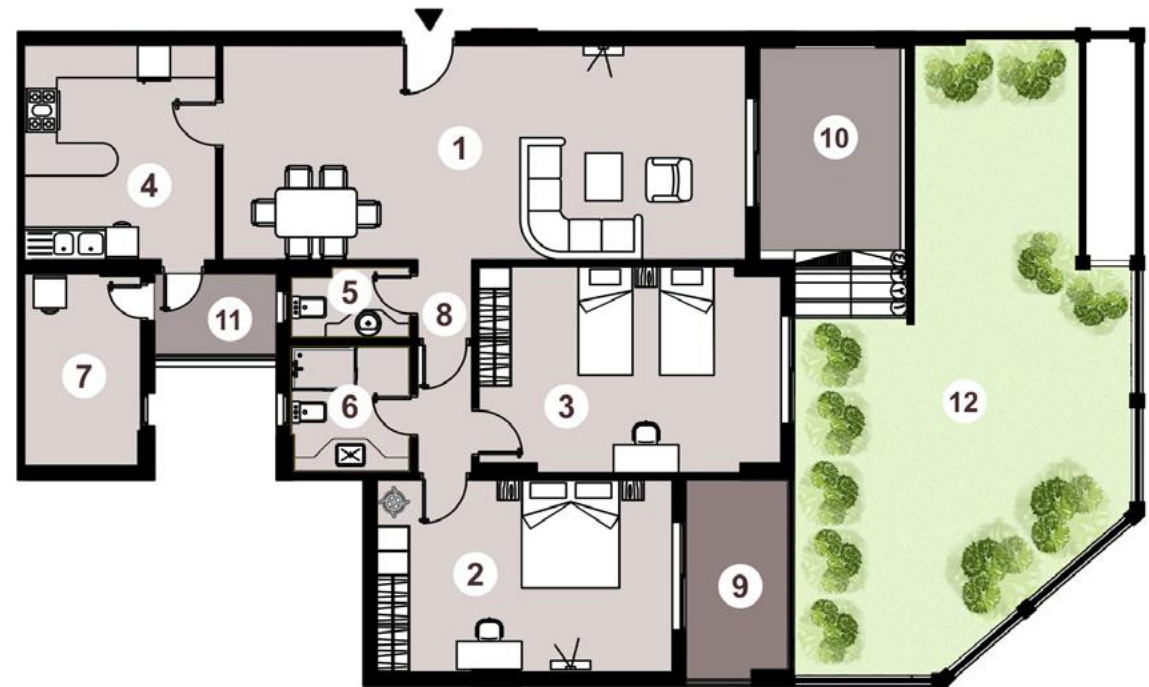
TYPE

02 - GARDEN UNIT

Area – 194m²

2 BEDROOMS

1.	Reception & Dining Room	9.64 x 3.95
2.	Bedroom 1	5.44 x 3.55
3.	Bedroom 2	5.57 x 3.80
4.	Kitchen	3.53 x 3.95
5.	Guest Bathroom	2.22 x 1.33
6.	Bathroom	2.22 x 2.35
7.	Laundry	2.15 x 3.55
8.	Corridor 1	1.00 x 3.93
9.	Terrace 1	3.68 x 1.88
10.	Terrace 2	3.90 x 2.60
11.	Terrace 3	1.50 x 2.30
12.	Garden	6.22 x 11.73



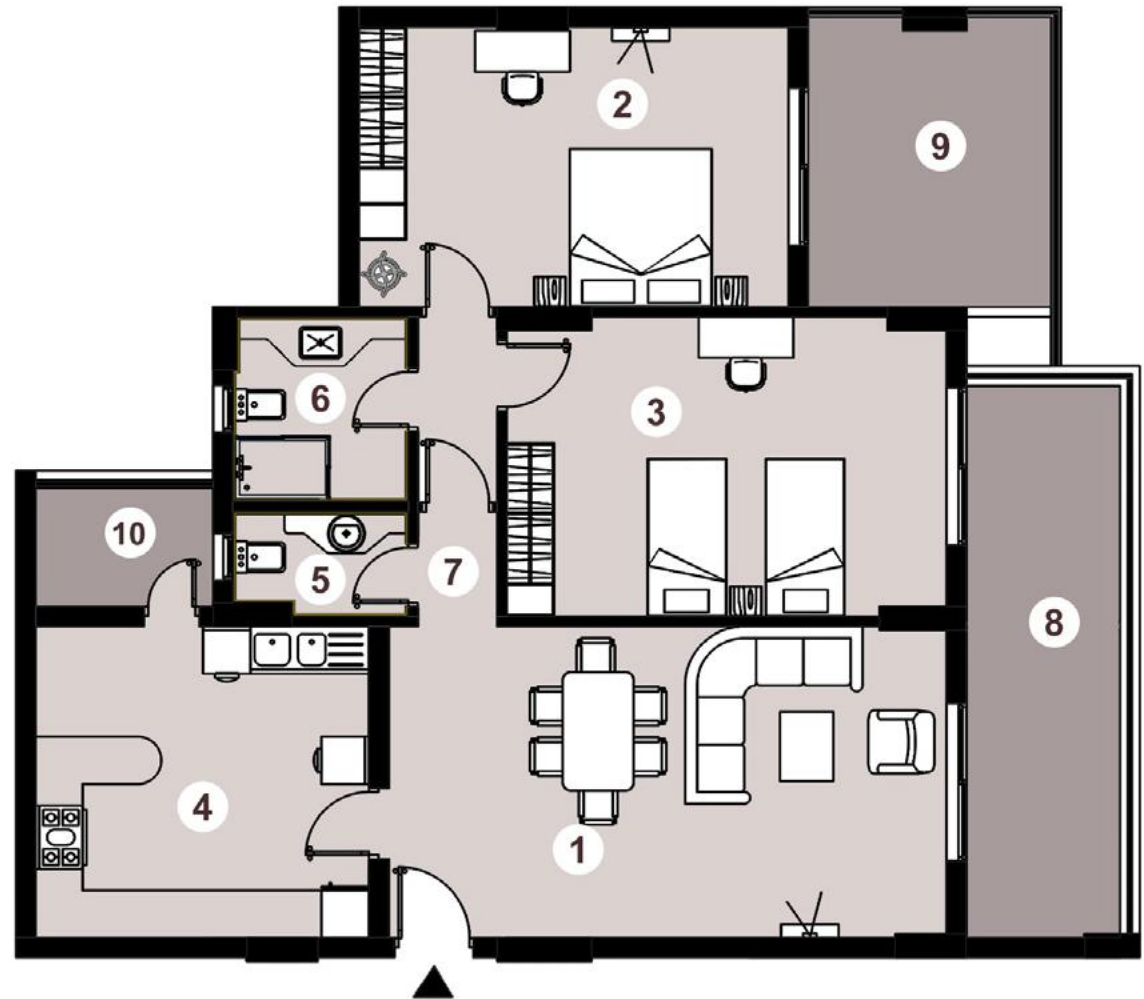
Disclaimer.

1. These renders are for illustrative purposes only. Minor changes are applicable as per actual Master planning design, construction, constructed units and to the CADs. Please refer to the site and to the CADs According to the third and sixth clauses. 2. Floor plans layout and furniture plans are for indicative purposes. 3. Please refer to the inventory list, CADs and actual constructed units for areas and areas details. Rendered areas details are based on averages and may vary per unit. 4. Diagrams are not to scale. 5. Room dimensions are consistent with structural elements and do not include wall finishes or additional construction. 6. Exact specifications and details vary between each unit. For exact technical details, please refer to the contract. 7. Reserving the right to make minor alterations to the drawings added or deducted from areas& values According to the third and sixth clauses.

TYPE 04

Area – 183m² 2 BEDROOMS

1.	Reception & Dining Room	7.07 x 3.95
2.	Bedroom 1	5.44 x 3.55
3.	Bedroom 2	5.57 x 3.80
4.	Kitchen	4.22 x 3.80
5.	Guest Bathroom	2.22 x 1.33
6.	Bathroom	2.22 x 2.35
7.	Corridor	1.00 x 3.93
8.	Terrace 1	7.00 x 1.95
9.	Terrace 2	3.08 x 3.55
10.	Terrace 3	1.50 x 2.30



Disclaimer.

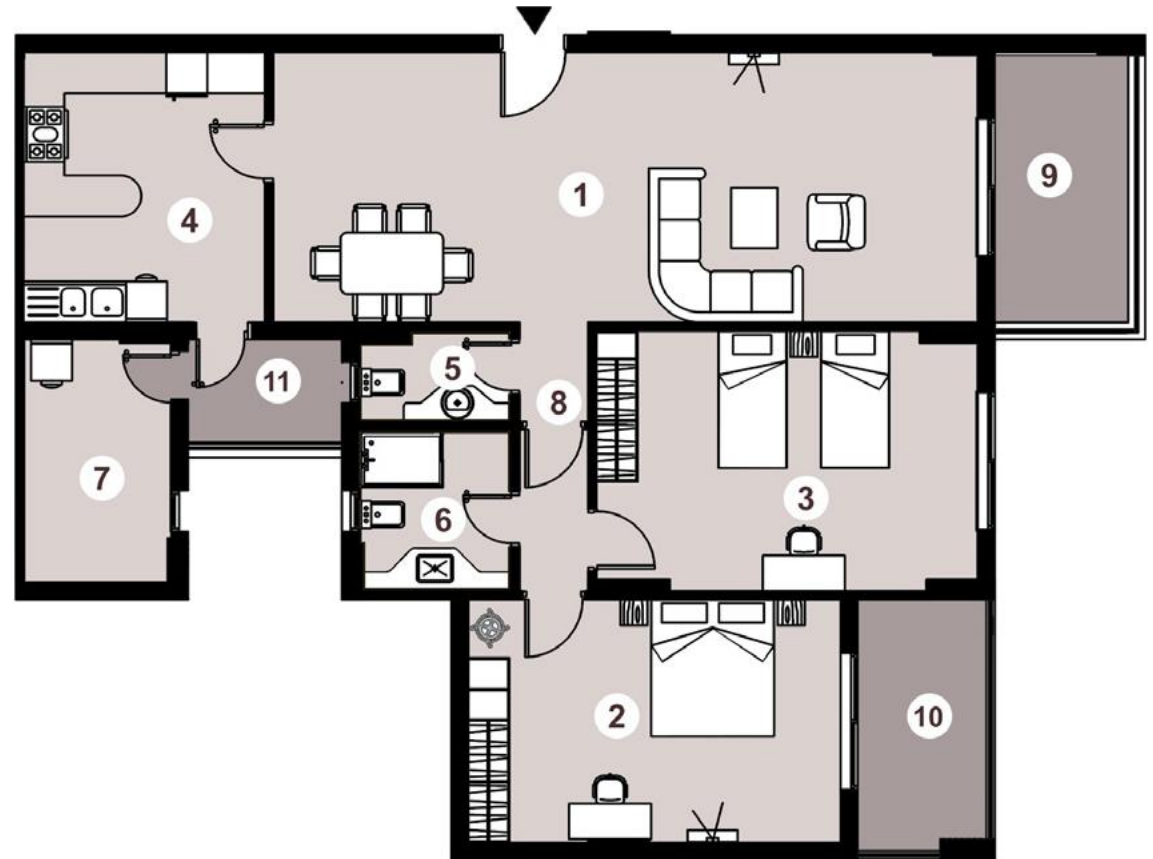
1. These renders are for illustrative purposes only. Minor changes are applicable as per actual Master planning design, construction, constructed units and to the CADs. Please refer to the site and to the CADs According to the third and sixth clauses. 2. Floor plans layout and furniture plans are for indicative purposes. 3. Please refer to the inventory list, CADs and actual constructed units for areas and areas details. Rendered areas details are based on averages and may vary per unit. 4. Diagrams are not to scale. 5. Room dimensions are consistent with structural elements and do not include wall finishes or additional construction. 6. Exact specifications and details vary between each unit. For exact technical details, please refer to the contract. 7. Reserving the right to make minor alterations to the drawings added or deducted from areas& values According to the third and sixth clauses.

TYPE 05

Area – 192m²

2 BEDROOMS

1.	Reception & Dining Room	10.30 x 3.95
2.	Bedroom 1	5.44 x 3.55
3.	Bedroom 2	5.57 x 3.80
4.	Kitchen	3.53 x 3.95
5.	Guest Bathroom	2.22 x 1.33
6.	Bathroom	2.22 x 2.35
7.	Laundry	2.15 x 3.55
8.	Corridor	1.00 x 3.93
9.	Terrace 1	3.90 x 2.00
10.	Terrace 2	3.68 x 1.88
11.	Terrace 3	2.25 x 1.50



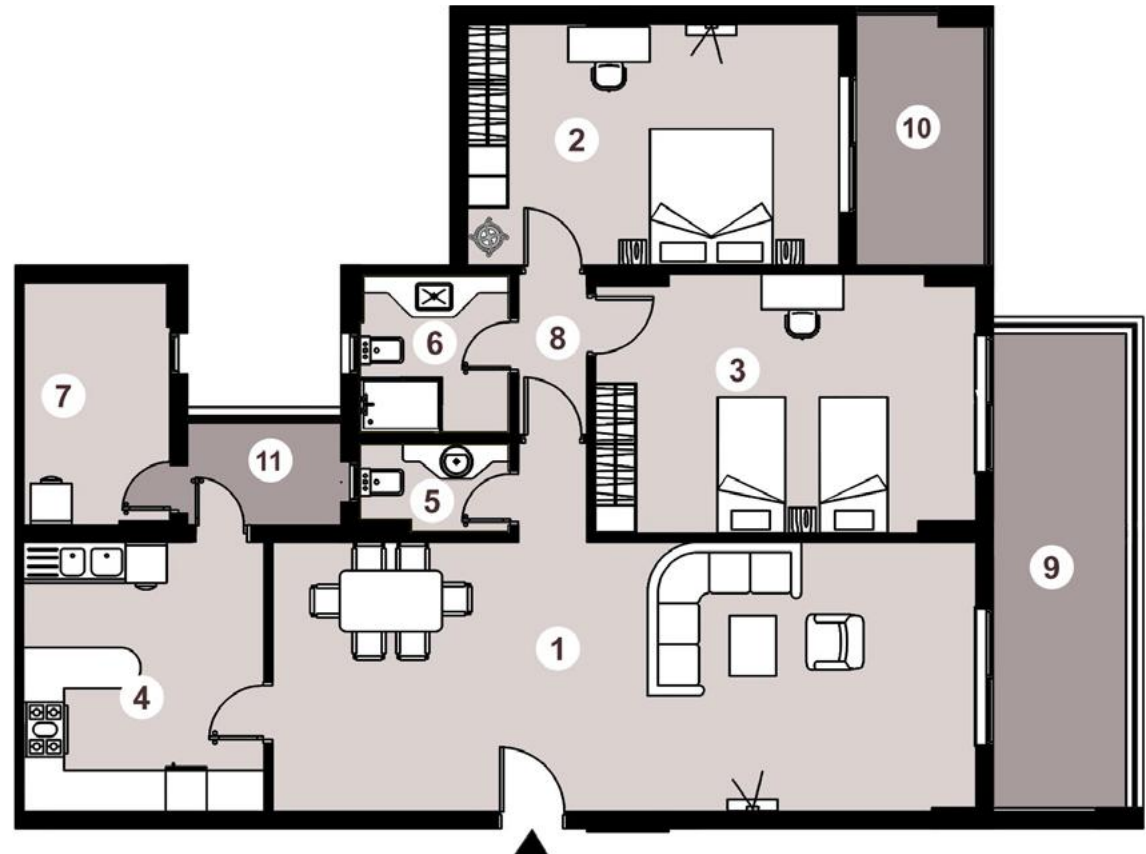
Disclaimer.

1. These renders are for illustrative purposes only. Minor changes are applicable as per actual Master planning design, construction, constructed units and to the CADs. Please refer to the site and to the CADs According to the third and sixth clauses. 2. Floor plans layout and furniture plans are for indicative purposes. 3. Please refer to the inventory list, CADs and actual constructed units for areas and areas details. Rendered areas details are based on averages and may vary per unit. 4. Diagrams are not to scale. 5. Room dimensions are consistent with structural elements and do not include wall finishes or additional construction. 6. Exact specifications and details vary between each unit. For exact technical details, please refer to the contract. 7. Reserving the right to make minor alterations to the drawings added or deducted from areas& values According to the third and sixth clauses.

TYPE 06

Area – 200m² 2 BEDROOMS

1.	Reception & Dining Room	10.30 x 3.95
2.	Bedroom 1	5.44 x 3.55
3.	Bedroom 2	5.57 x 3.80
4.	Kitchen	3.53 x 3.95
5.	Guest Bathroom	2.22 x 1.33
6.	Bathroom	2.22 x 2.35
7.	Laundry	2.15 x 3.55
8.	Corridor	1.00 x 3.93
9.	Terrace 1	7.00 x 1.95
10.	Terrace 2	3.68 x 1.88
11.	Terrace 3	2.25 x 1.50



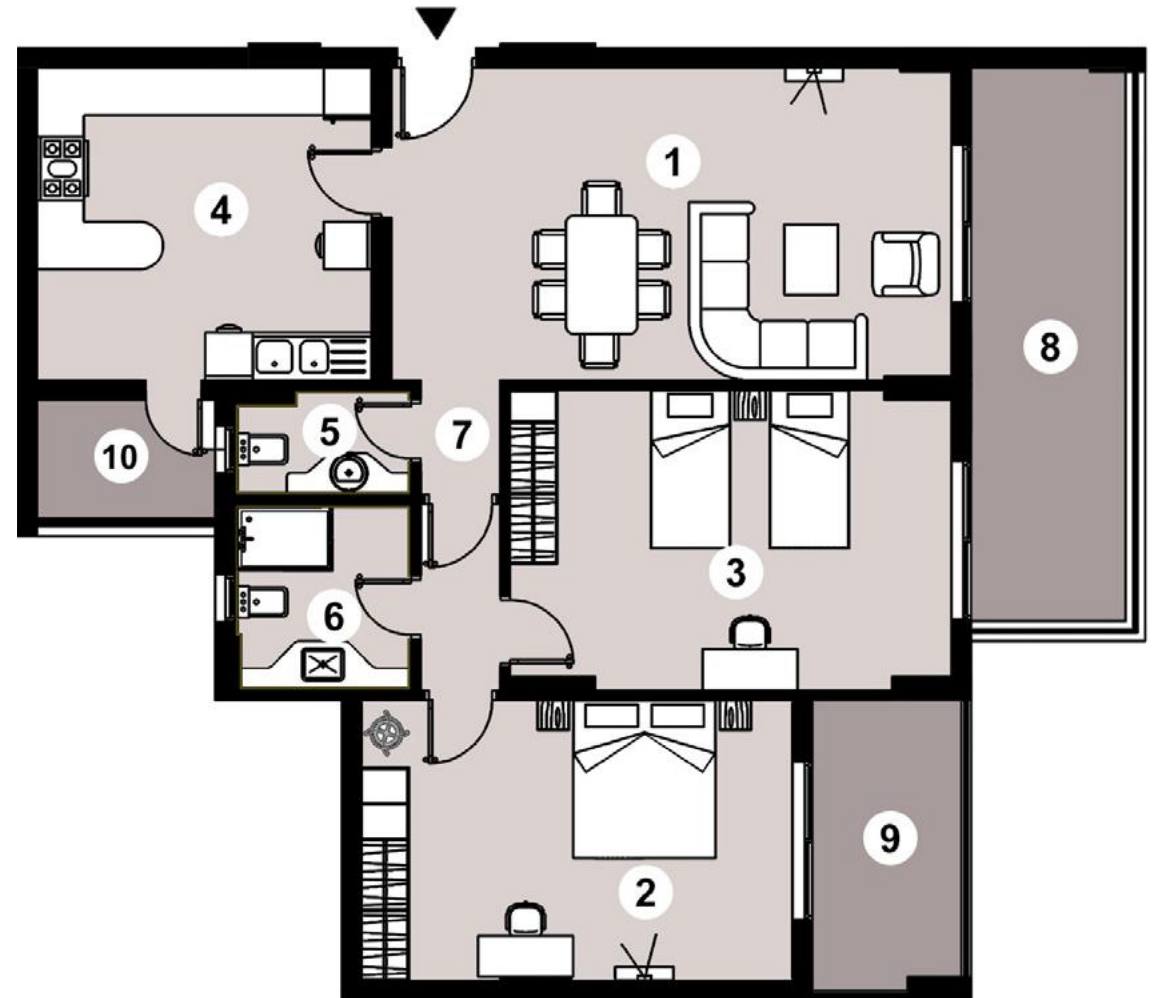
Disclaimer.

1. These renders are for illustrative purposes only. Minor changes are applicable as per actual Master planning design, construction, constructed units and to the CADs. Please refer to the site and to the CADs According to the third and sixth clauses. 2. Floor plans layout and furniture plans are for indicative purposes. 3. Please refer to the inventory list, CADs and actual constructed units for areas and areas details. Rendered areas details are based on averages and may vary per unit. 4. Diagrams are not to scale. 5. Room dimensions are consistent with structural elements and do not include wall finishes or additional construction. 6. Exact specifications and details vary between each unit. For exact technical details, please refer to the contract. 7. Reserving the right to make minor alterations to the drawings added or deducted from areas& values According to the third and sixth clauses.

TYPE 07

Area – 176m²
2 BEDROOMS

1.	Reception & Dining Room	7.07 x 3.95
2.	Bedroom 1	5.44 x 3.55
3.	Bedroom 2	5.57 x 3.80
4.	Kitchen	4.22 x 3.95
5.	Guest Bathroom	2.22 x 1.33
6.	Bathroom	2.22 x 2.35
7.	Corridor	1.00 x 3.93
8.	Terrace 1	7.00 x 1.95
9.	Terrace 2	1.88 x 3.67
10.	Terrace 3	2.25 x 1.50



Disclaimer.

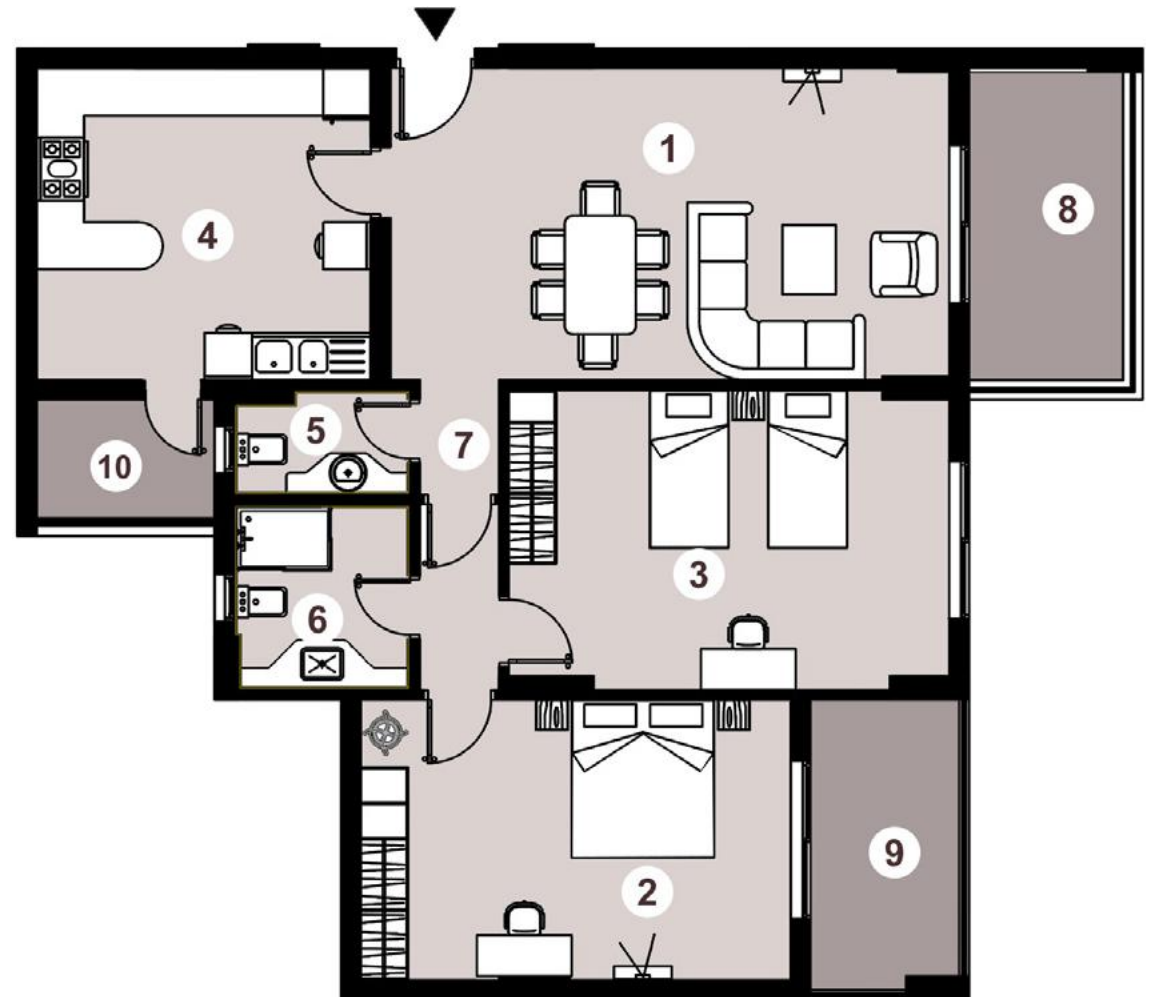
1. These renders are for illustrative purposes only. Minor changes are applicable as per actual Master planning design, construction, constructed units and to the CADs. Please refer to the site and to the CADs According to the third and sixth clauses. 2. Floor plans layout and furniture plans are for indicative purposes. 3. Please refer to the inventory list, CADs and actual constructed units for areas and areas details. Rendered areas details are based on averages and may vary per unit. 4. Diagrams are not to scale. 5. Room dimensions are consistent with structural elements and do not include wall finishes or additional construction. 6. Exact specifications and details vary between each unit. For exact technical details, please refer to the contract. 7. Reserving the right to make minor alterations to the drawings added or deducted from areas & values According to the third and sixth clauses.

TYPE 08

Area – 168m²

2 BEDROOMS

1.	Reception & Dining Room	7.07 x 3.95
2.	Bedroom 1	5.44 x 3.55
3.	Bedroom 2	5.57 x 3.80
4.	Kitchen	4.22 x 3.95
5.	Guest Bathroom	2.22 x 1.33
6.	Bathroom	2.22 x 2.35
7.	Corridor	1.00 x 3.93
8.	Terrace 1	3.95 x 1.95
9.	Terrace 2	1.88 x 3.67
10.	Terrace 3	2.25 x 1.50



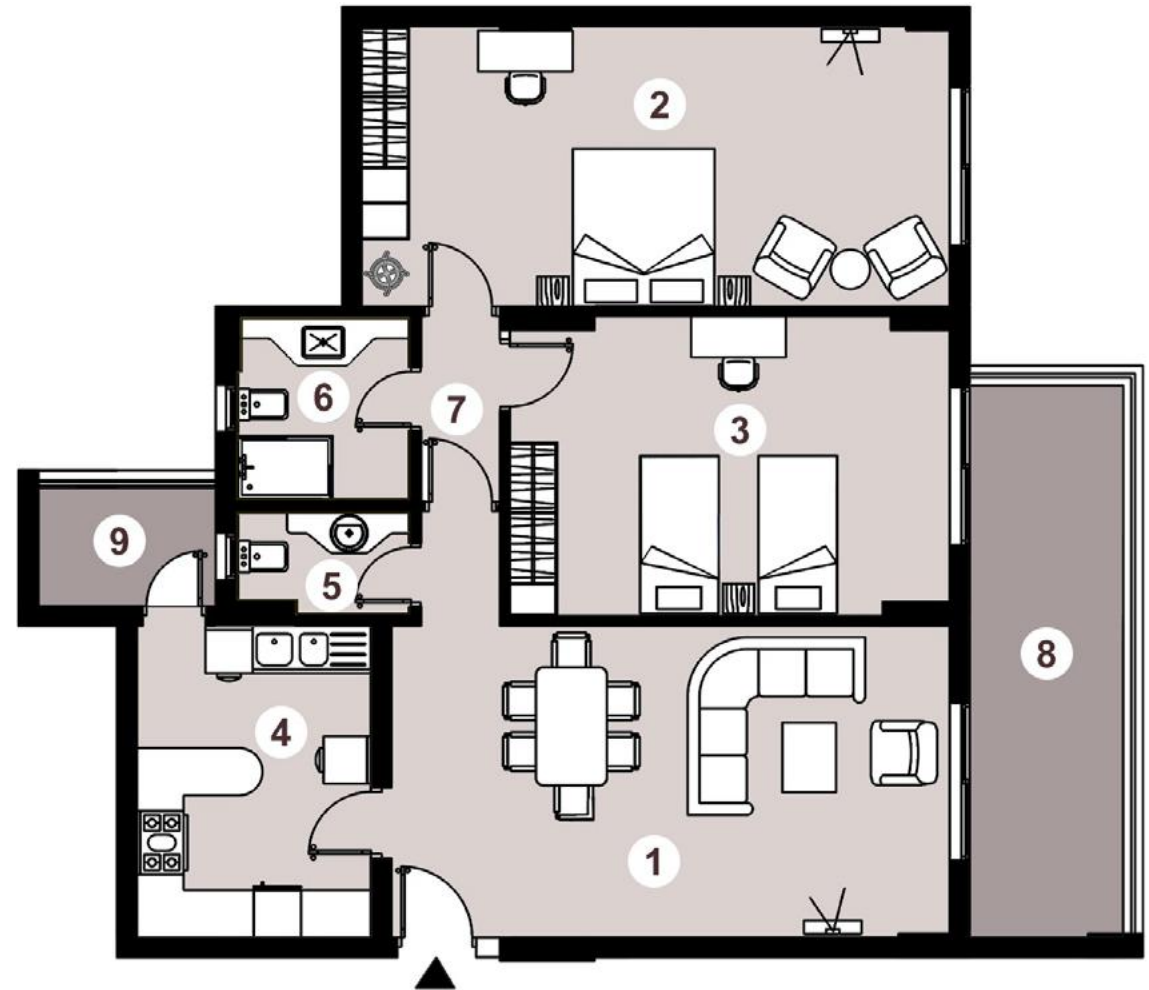
Disclaimer.

1. These renders are for illustrative purposes only. Minor changes are applicable as per actual Master planning design, construction, constructed units and to the CADs. Please refer to the site and to the CADs According to the third and sixth clauses. 2. Floor plans layout and furniture plans are for indicative purposes. 3. Please refer to the inventory list, CADs and actual constructed units for areas and areas details. Rendered areas details are based on averages and may vary per unit. 4. Diagrams are not to scale. 5. Room dimensions are consistent with structural elements and do not include wall finishes or additional construction. 6. Exact specifications and details vary between each unit. For exact technical details, please refer to the contract. 7. Reserving the right to make minor alterations to the drawings added or deducted from areas & values According to the third and sixth clauses.

TYPE 09

Area – 170m² 2 BEDROOMS

1.	Reception & Dining Room	7.07 x 3.95
2.	Bedroom 1	7.45 x 3.55
3.	Bedroom 2	5.57 x 3.80
4.	Kitchen	2.97 x 3.95
5.	Guest Bathroom	2.22 x 1.33
6.	Bathroom	2.22 x 2.35
7.	Corridor	1.00 x 3.93
8.	Terrace 1	7.00 x 1.95
9.	Terrace 2	2.25 x 1.50



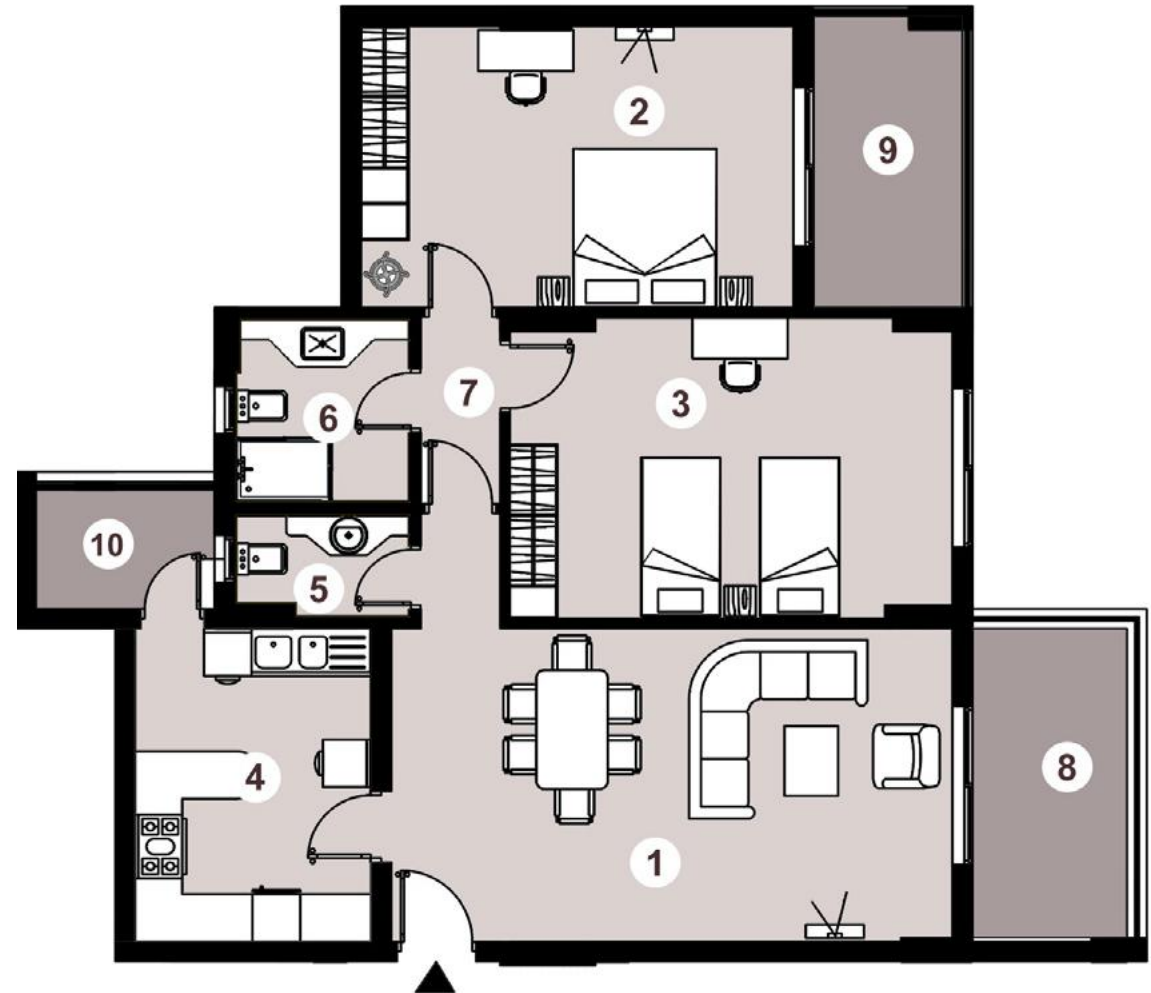
Disclaimer.

1. These renders are for illustrative purposes only. Minor changes are applicable as per actual Master planning design, construction, constructed units and to the CADs. Please refer to the site and to the CADs According to the third and sixth clauses. 2. Floor plans layout and furniture plans are for indicative purposes. 3. Please refer to the inventory list, CADs and actual constructed units for areas and areas details. Rendered areas details are based on averages and may vary per unit. 4. Diagrams are not to scale. 5. Room dimensions are consistent with structural elements and do not include wall finishes or additional construction. 6. Exact specifications and details vary between each unit. For exact technical details, please refer to the contract. 7. Reserving the right to make minor alterations to the drawings added or deducted from areas& values According to the third and sixth clauses.

TYPE 10

Area – 161m²
2 BEDROOMS

1.	Reception & Dining Room	7.07 x 3.95
2.	Bedroom 1	5.44 x 3.55
3.	Bedroom 2	5.57 x 3.80
4.	Kitchen	2.97 x 3.95
5.	Guest Bathroom	2.22 x 1.33
6.	Bathroom	2.22 x 2.35
7.	Corridor	1.00 x 3.93
8.	Terrace 1	3.95 x 1.95
9.	Terrace 2	1.88 x 3.67
10.	Terrace 3	2.25 x 1.50



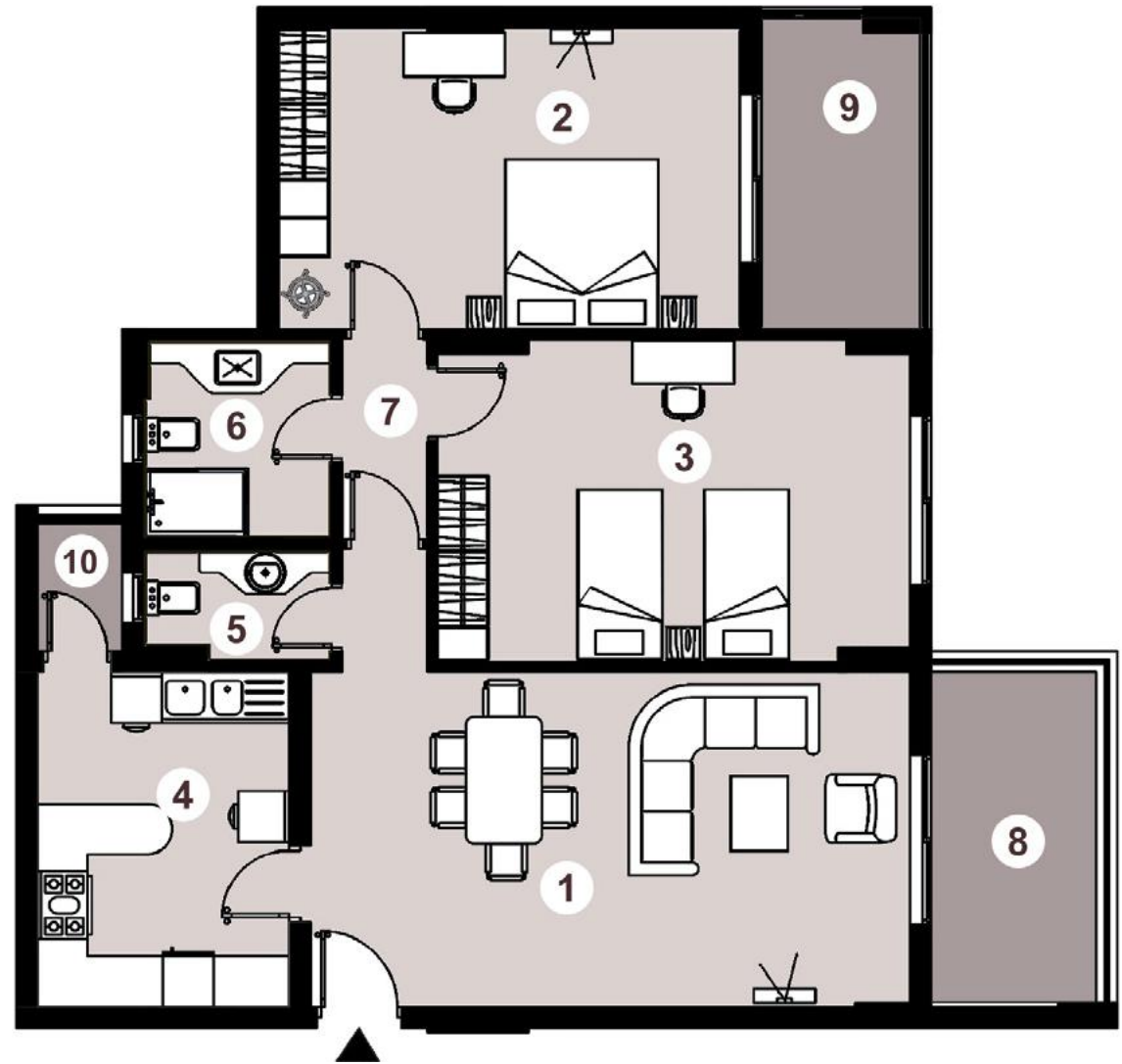
Disclaimer.

1. These renders are for illustrative purposes only. Minor changes are applicable as per actual Master planning design, construction, constructed units and to the CADs. Please refer to the site and to the CADs According to the third and sixth clauses. 2. Floor plans layout and furniture plans are for indicative purposes. 3. Please refer to the inventory list, CADs and actual constructed units for areas and areas details. Rendered areas details are based on averages and may vary per unit. 4. Diagrams are not to scale. 5. Room dimensions are consistent with structural elements and do not include wall finishes or additional construction. 6. Exact specifications and details vary between each unit. For exact technical details, please refer to the contract. 7. Reserving the right to make minor alterations to the drawings added or deducted from areas& values According to the third and sixth clauses.

TYPE 11

Area – 157m² 2 BEDROOMS

1.	Reception & Dining Room	7.07 x 3.95
2.	Bedroom 1	5.44 x 3.55
3.	Bedroom 2	5.57 x 3.80
4.	Kitchen	2.97 x 3.95
5.	Guest Bathroom	2.22 x 1.33
6.	Bathroom	2.22 x 2.35
7.	Corridor	1.00 x 3.93
8.	Terrace 1	3.95 x 1.95
9.	Terrace 2	1.88 x 3.67
10.	Terrace 3	1.00 x 1.50



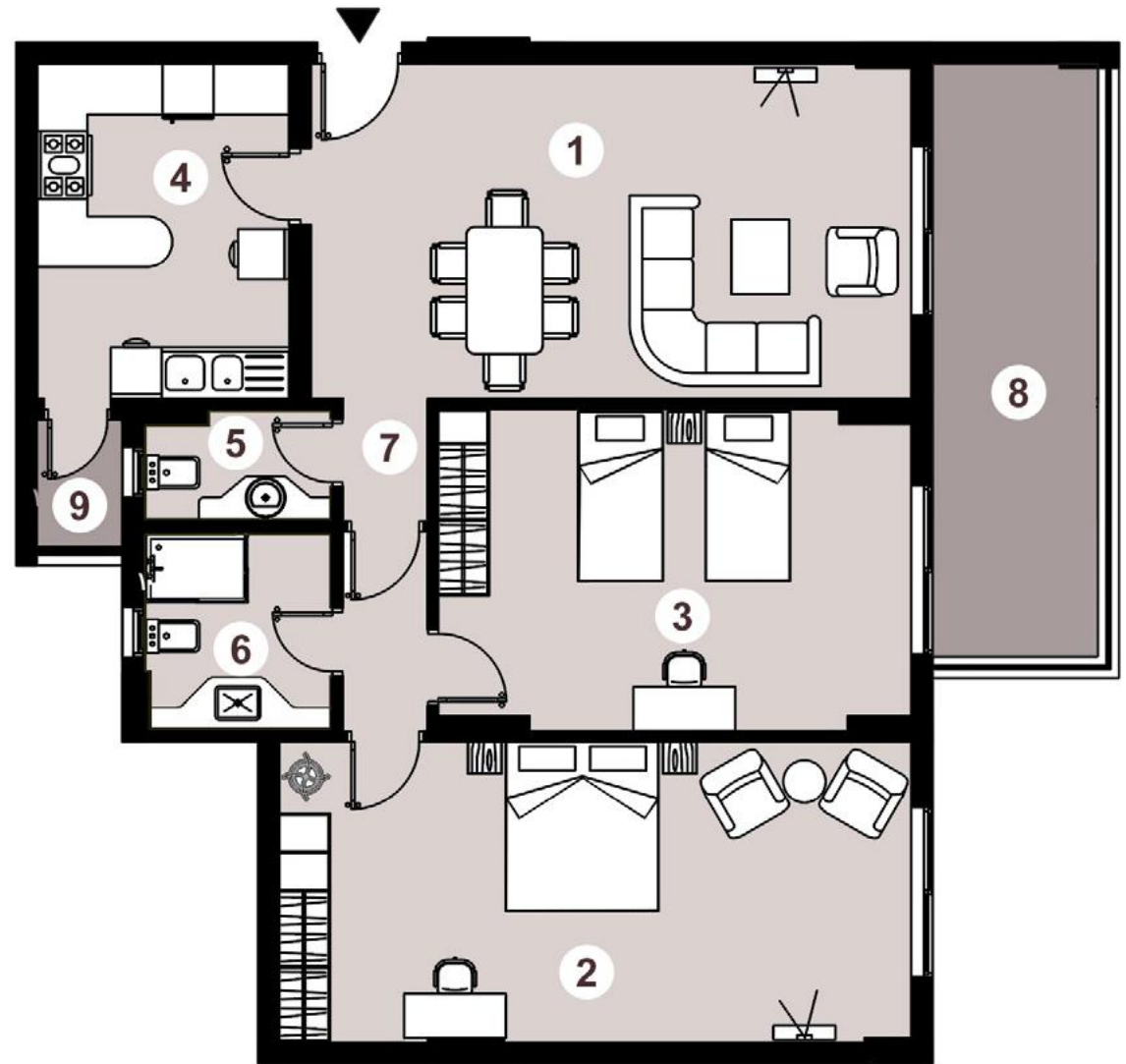
Disclaimer.

1. These renders are for illustrative purposes only. Minor changes are applicable as per actual Master planning design, construction, constructed units and to the CADs. Please refer to the site and to the CADs According to the third and sixth clauses. 2. Floor plans layout and furniture plans are for indicative purposes. 3. Please refer to the inventory list, CADs and actual constructed units for areas and areas details. Rendered areas details are based on averages and may vary per unit. 4. Diagrams are not to scale. 5. Room dimensions are consistent with structural elements and do not include wall finishes or additional construction. 6. Exact specifications and details vary between each unit. For exact technical details, please refer to the contract. 7. Reserving the right to make minor alterations to the drawings added or deducted from areas& values According to the third and sixth clauses.

TYPE 12

Area – 166m²
2 BEDROOMS

1.	Reception & Dining Room	7.07 x 3.95
2.	Bedroom 1	7.45 x 3.55
3.	Bedroom 2	5.57 x 3.80
4.	Kitchen	2.97 x 3.95
5.	Guest Bathroom	2.22 x 1.33
6.	Bathroom	2.22 x 2.35
7.	Corridor	1.00 x 3.93
8.	Terrace 1	7.00 x 1.95
9.	Terrace 2	1.00 x 1.50



Disclaimer.

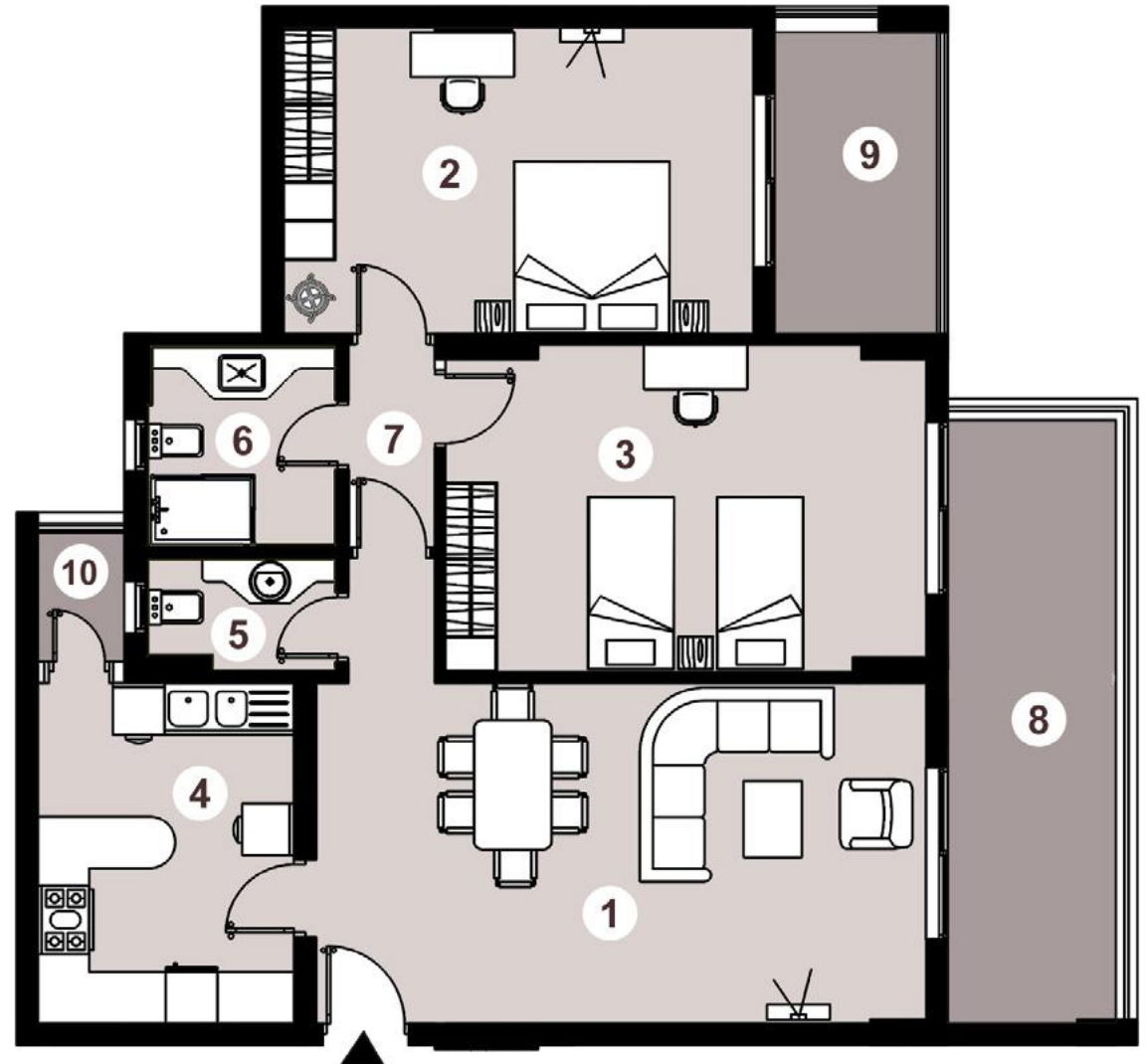
1. These renders are for illustrative purposes only. Minor changes are applicable as per actual Master planning design, construction, constructed units and to the CADs. Please refer to the site and to the CADs According to the third and sixth clauses. 2. Floor plans layout and furniture plans are for indicative purposes. 3. Please refer to the inventory list, CADs and actual constructed units for areas and areas details. Rendered areas details are based on averages and may vary per unit. 4. Diagrams are not to scale. 5. Room dimensions are consistent with structural elements and do not include wall finishes or additional construction. 6. Exact specifications and details vary between each unit. For exact technical details, please refer to the contract. 7. Reserving the right to make minor alterations to the drawings added or deducted from areas& values According to the third and sixth clauses.

TYPE 18

Area – 166m²

2 BEDROOMS

1.	Reception & Dining Room	7.07 x 3.95
2.	Bedroom 1	5.44 x 3.55
3.	Bedroom 2	5.57 x 3.80
4.	Kitchen	2.97 x 3.95
5.	Guest Bathroom	2.22 x 1.33
6.	Bathroom	2.22 x 2.35
7.	Corridor	1.00 x 3.93
8.	Terrace 1	7.00 x 1.95
9.	Terrace 2	1.88 x 3.67
10.	Terrace 3	1.00 x 1.50



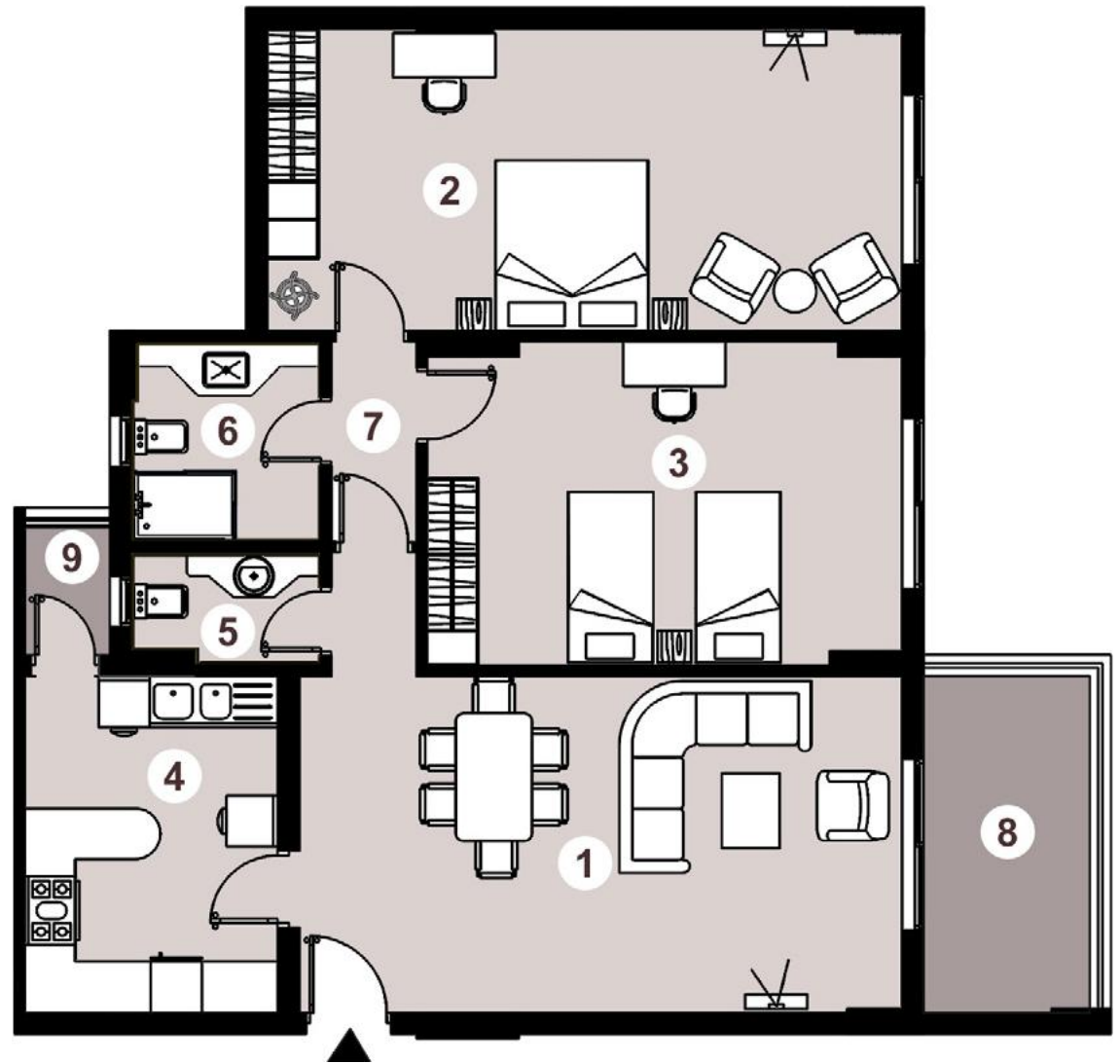
Disclaimer.

1. These renders are for illustrative purposes only. Minor changes are applicable as per actual Master planning design, construction, constructed units and to the CADs. Please refer to the site and to the CADs According to the third and sixth clauses. 2. Floor plans layout and furniture plans are for indicative purposes. 3. Please refer to the inventory list, CADs and actual constructed units for areas and areas details. Rendered areas details are based on averages and may vary per unit. 4. Diagrams are not to scale. 5. Room dimensions are consistent with structural elements and do not include wall finishes or additional construction. 6. Exact specifications and details vary between each unit. For exact technical details, please refer to the contract. 7. Reserving the right to make minor alterations to the drawings added or deducted from areas& values According to the third and sixth clauses.

TYPE 20

Area – 157m² 2 BEDROOMS

1.	Reception & Dining Room	7.07 x 3.95
2.	Bedroom 1	7.45 x 3.55
3.	Bedroom 2	5.57 x 3.80
4.	Kitchen	2.97 x 3.95
5.	Guest Bathroom	2.22 x 1.33
6.	Bathroom	2.22 x 2.35
7.	Corridor	1.00 x 3.93
8.	Terrace 1	3.95 x 1.95
9.	Terrace 2	1.00 x 1.50



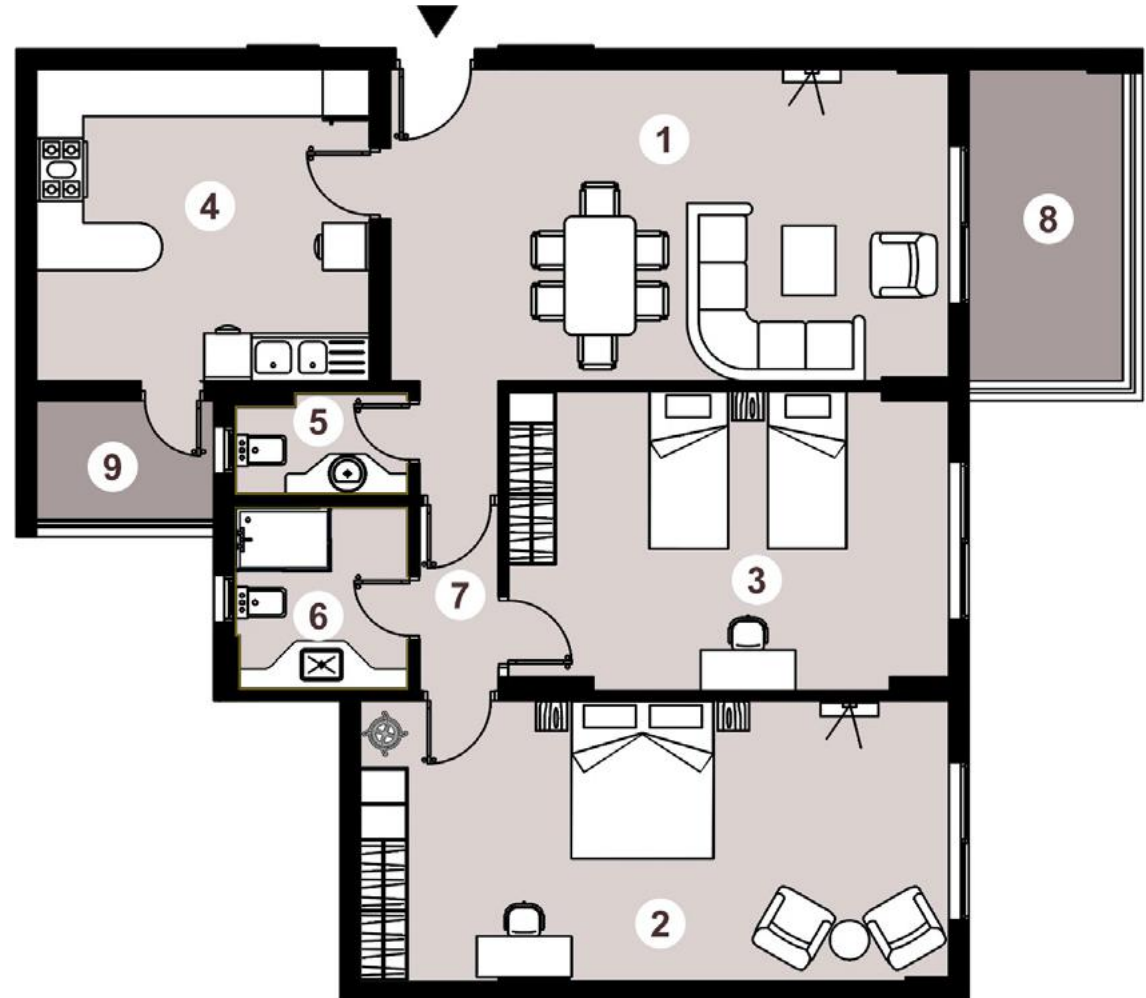
Disclaimer.

1. These renders are for illustrative purposes only. Minor changes are applicable as per actual Master planning design, construction, constructed units and to the CADs. Please refer to the site and to the CADs According to the third and sixth clauses. 2. Floor plans layout and furniture plans are for indicative purposes. 3. Please refer to the inventory list, CADs and actual constructed units for areas and areas details. Rendered areas details are based on averages and may vary per unit. 4. Diagrams are not to scale. 5. Room dimensions are consistent with structural elements and do not include wall finishes or additional construction. 6. Exact specifications and details vary between each unit. For exact technical details, please refer to the contract. 7. Reserving the right to make minor alterations to the drawings added or deducted from areas& values According to the third and sixth clauses.

TYPE 22

Area – 169m²
2 BEDROOMS

1.	Reception & Dining Room	7.07 x 3.95
2.	Bedroom 1	7.45 x 3.55
3.	Bedroom 2	5.57 x 3.80
4.	Kitchen	4.22 x 3.95
5.	Guest Bathroom	2.22 x 1.33
6.	Bathroom	2.22 x 2.35
7.	Corridor	1.00 x 3.93
8.	Terrace 1	3.95 x 1.95
9.	Terrace 2	2.25 x 1.50



Disclaimer.

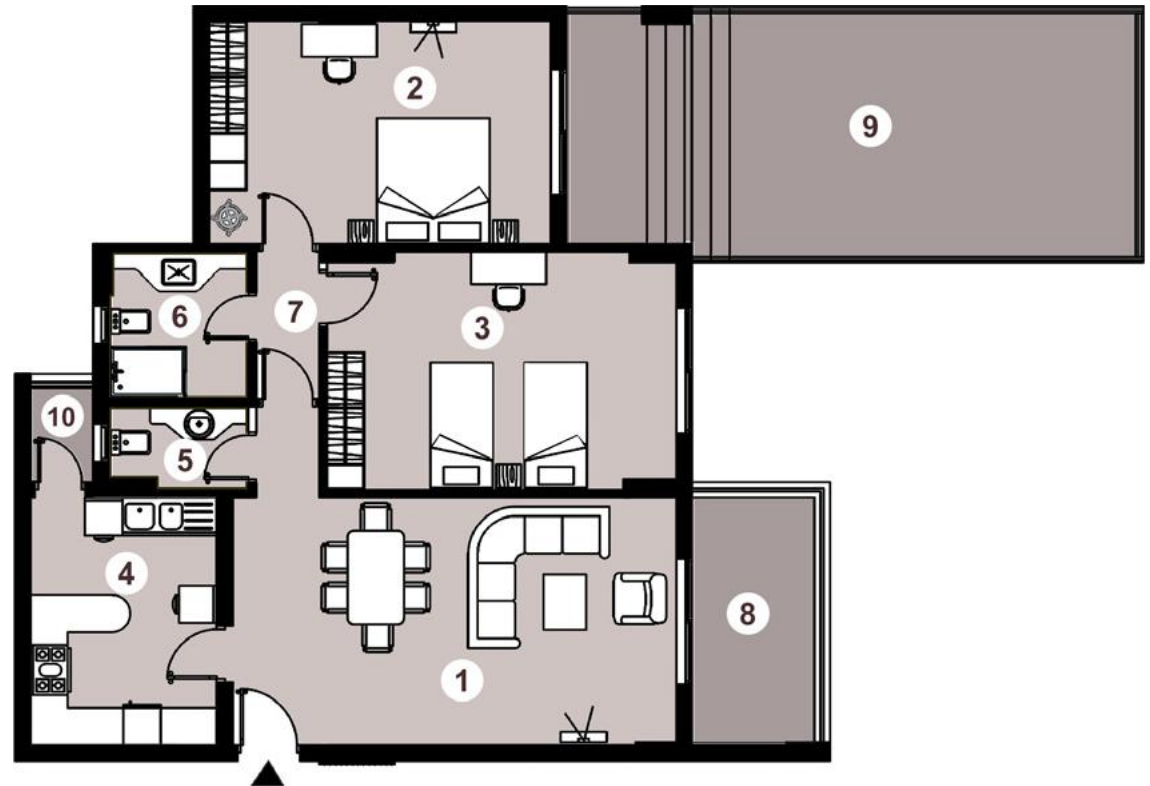
1. These renders are for illustrative purposes only. Minor changes are applicable as per actual Master planning design, construction, constructed units and to the CADs. Please refer to the site and to the CADs According to the third and sixth clauses. 2. Floor plans layout and furniture plans are for indicative purposes. 3. Please refer to the inventory list, CADs and actual constructed units for areas and areas details. Rendered areas details are based on averages and may vary per unit. 4. Diagrams are not to scale. 5. Room dimensions are consistent with structural elements and do not include wall finishes or additional construction. 6. Exact specifications and details vary between each unit. For exact technical details, please refer to the contract. 7. Reserving the right to make minor alterations to the drawings added or deducted from areas& values According to the third and sixth clauses.

TYPE 23

Area – 195m²

2 BEDROOMS

1.	Reception & Dining Room	7.07 x 3.95
2.	Bedroom 1	5.44 x 3.55
3.	Bedroom 2	5.57 x 3.80
4.	Kitchen	2.97 x 3.95
5.	Guest Bathroom	2.22 x 1.33
6.	Bathroom	2.22 x 2.35
7.	Corridor	1.00 x 3.93
8.	Terrace 1	3.95 x 1.95
9.	Terrace 2	3.67 x 9.00
10.	Terrace 3	1.00 x 1.50



Disclaimer.

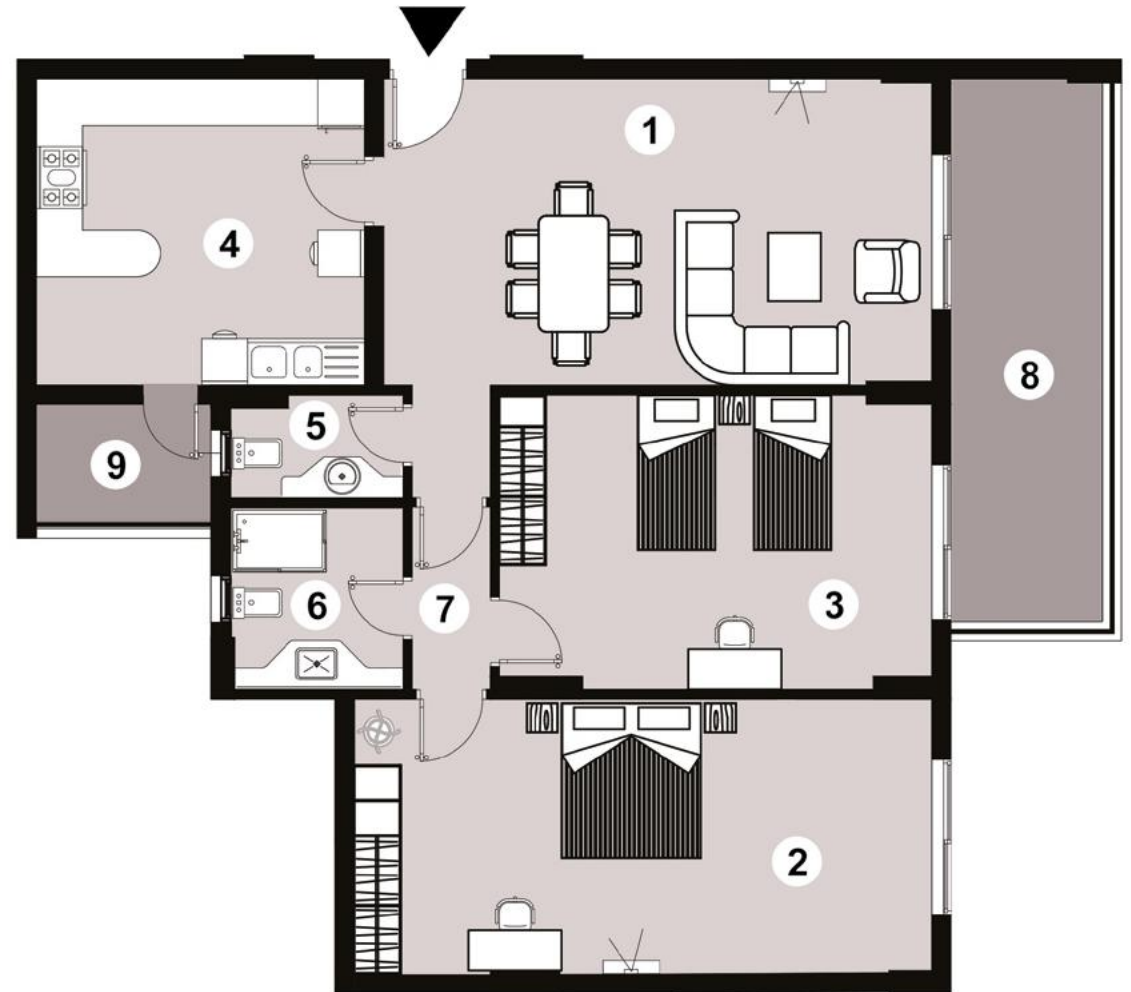
1. These renders are for illustrative purposes only. Minor changes are applicable as per actual Master planning design, construction, constructed units and to the CADs. Please refer to the site and to the CADs According to the third and sixth clauses. 2. Floor plans layout and furniture plans are for indicative purposes. 3. Please refer to the inventory list, CADs and actual constructed units for areas and areas details. Rendered areas details are based on averages and may vary per unit. 4. Diagrams are not to scale. 5. Room dimensions are consistent with structural elements and do not include wall finishes or additional construction. 6. Exact specifications and details vary between each unit. For exact technical details, please refer to the contract. 7. Reserving the right to make minor alterations to the drawings added or deducted from areas& values According to the third and sixth clauses.

TYPE 27

Area – 176m²

2 BEDROOMS

1.	Reception & Dining	7.07 x 3.95
2.	Bedroom 1	7.45 x 3.80
3.	Bedroom 2	5.44 x 3.55
4.	Kitchen	4.22 x 3.95
5.	Guest Bathroom	2.22 x 1.33
6.	Bathroom	2.35 x 2.22
7.	Corridor	3.93 x 1.00
8.	Terrace 1	7.00 x 1.95
9.	Terrace 2	2.25 x 1.50



Disclaimer.

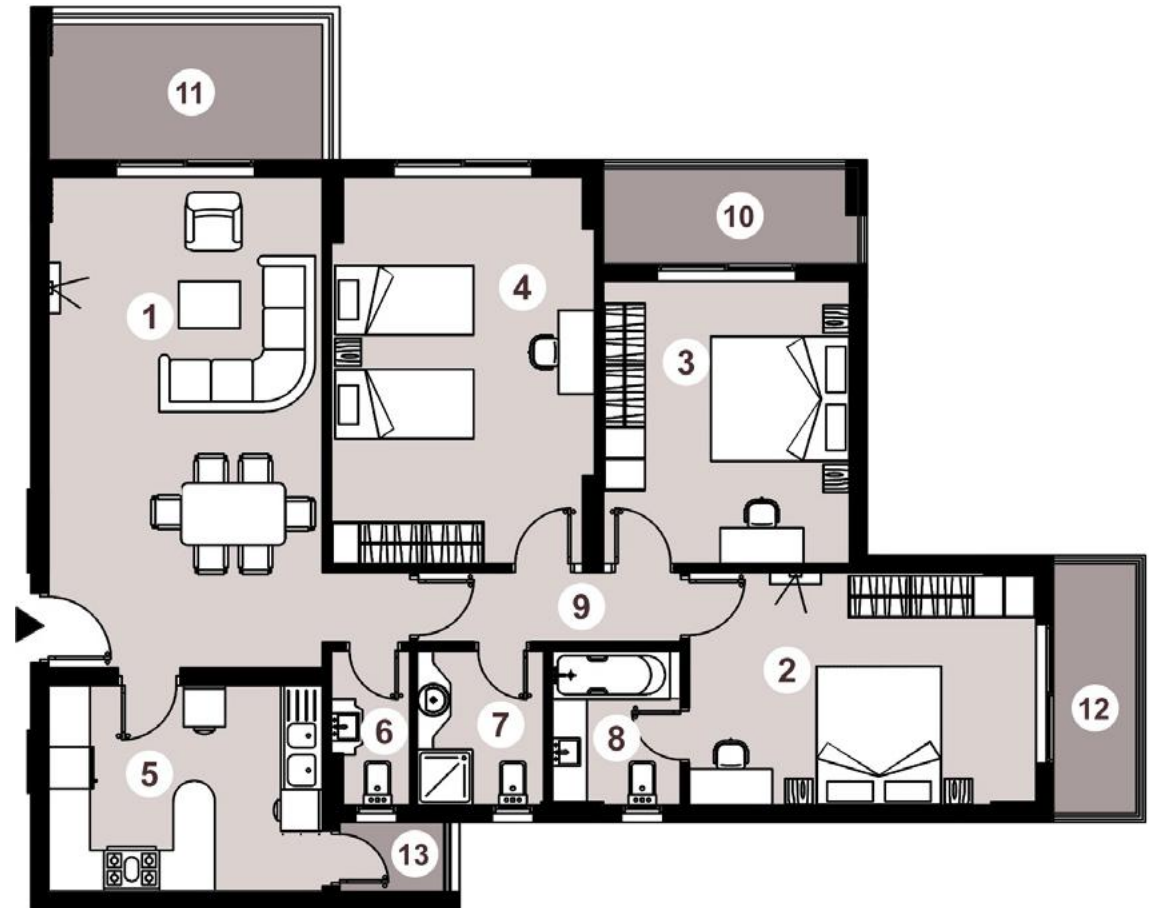
1. These renders are for illustrative purposes only. Minor changes are applicable as per actual Master planning design, construction, constructed units and to the CADs. Please refer to the site and to the CADs According to the third and sixth clauses. 2. Floor plans layout and furniture plans are for indicative purposes. 3. Please refer to the inventory list, CADs and actual constructed units for areas and areas details. Rendered areas details are based on averages and may vary per unit. 4. Diagrams are not to scale. 5. Room dimensions are consistent with structural elements and do not include wall finishes or additional construction. 6. Exact specifications and details vary between each unit. For exact technical details, please refer to the contract. 7. Reserving the right to make minor alterations to the drawings added or deducted from areas& values According to the third and sixth clauses.

3 BEDROOMS

TYPE 13

Area – 185m²
3 BEDROOMS

1.	Reception & Dining Room	7.07 x 3.95
2.	Master Bedroom	5.00 x 3.35
3.	Bedroom 1	4.07 x 3.55
4.	Bedroom 2	5.57 x 3.80
5.	Kitchen	2.97 x 3.95
6.	Guest Bathroom	2.22 x 1.14
7.	Bathroom	2.22 x 1.82
8.	Master Bedroom Bathroom	2.22 x 1.84
9.	Corridor	1.00 x 5.16
10.	Terrace 1	3.95 x 1.95
11.	Terrace 2	3.55 x 1.83
12.	Terrace 3	3.60 x 1.20
13.	Terrace 4	1.00 x 1.50



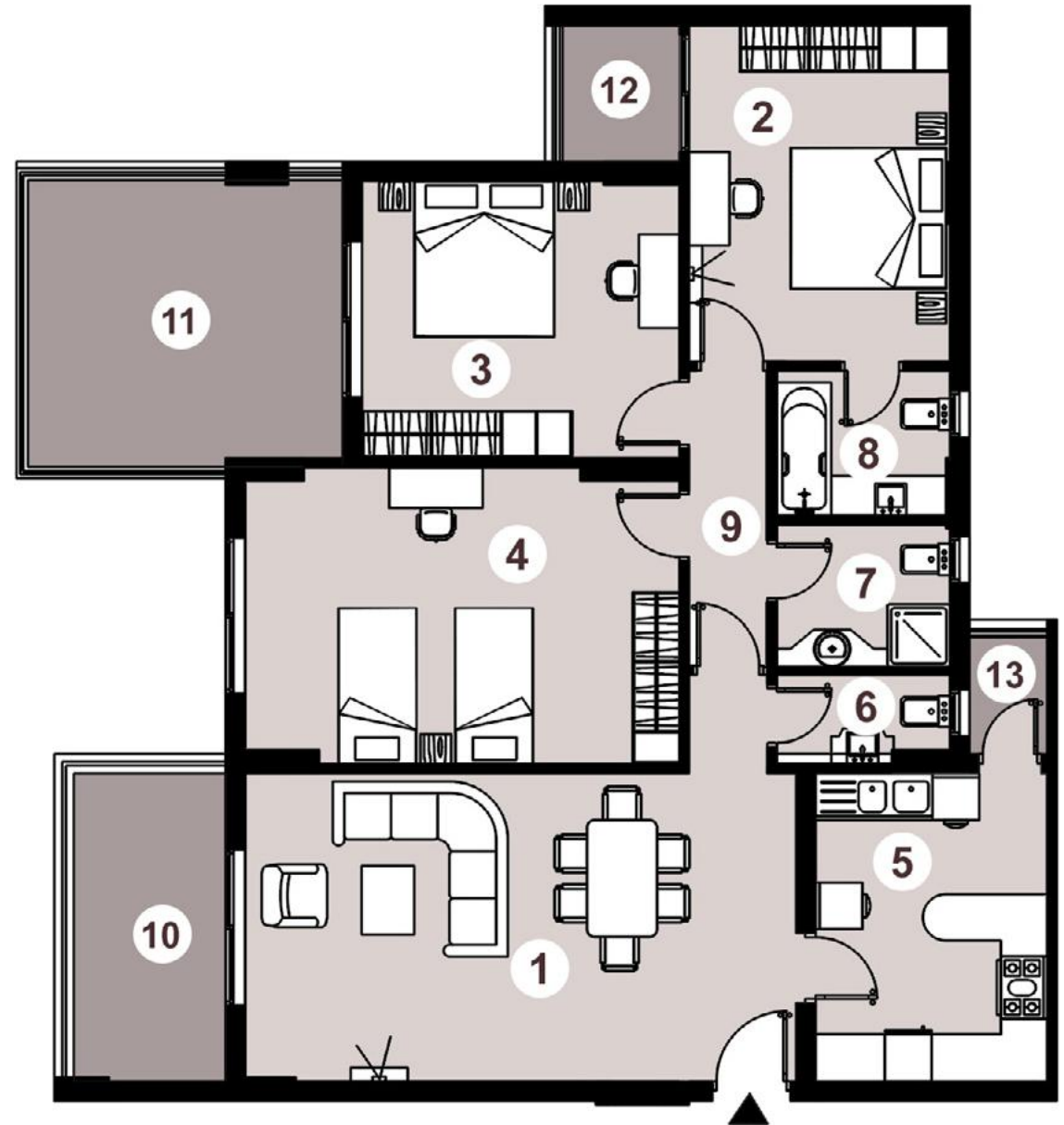
Disclaimer.

1. These renders are for illustrative purposes only. Minor changes are applicable as per actual Master planning design, construction, constructed units and to the CADs. Please refer to the site and to the CADs According to the third and sixth clauses. 2. Floor plans layout and furniture plans are for indicative purposes. 3. Please refer to the inventory list, CADs and actual constructed units for areas and areas details. Rendered areas details are based on averages and may vary per unit. 4. Diagrams are not to scale. 5. Room dimensions are consistent with structural elements and do not include wall finishes or additional construction. 6. Exact specifications and details vary between each unit. For exact technical details, please refer to the contract. 7. Reserving the right to make minor alterations to the drawings added or deducted from areas& values According to the third and sixth clauses.

TYPE 14

Area – 192m²
3 BEDROOMS

1.	Reception & Dining Room	7.07 x 3.95
2.	Master Bedroom	4.30 x 3.35
3.	Bedroom 1	4.07 x 3.55
4.	Bedroom 2	5.57 x 3.80
5.	Kitchen	2.97 x 3.95
6.	Guest Bathroom	2.22 x 1.14
7.	Bathroom	2.22 x 1.82
8.	Master Bedroom Bathroom	2.22 x 1.84
9.	Corridor	1.00 x 5.16
10.	Terrace 1	3.95 x 1.95
11.	Terrace 2	3.68 x 4.04
12.	Terrace 3	1.75 x 1.50
13.	Terrace 4	1.00 x 1.50



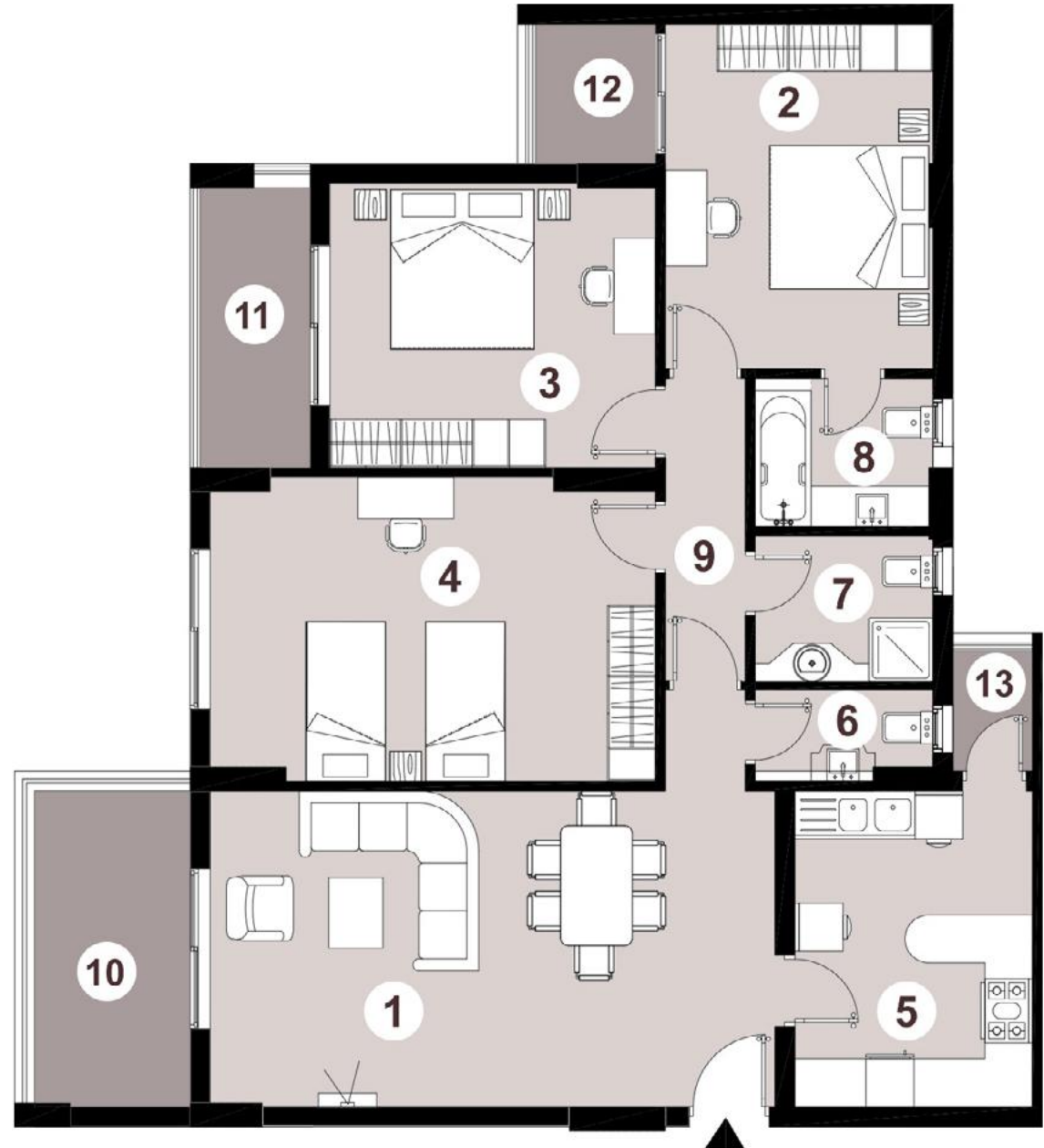
Disclaimer.

1. These renders are for illustrative purposes only. Minor changes are applicable as per actual Master planning design, construction, constructed units and to the CADs. Please refer to the site and to the CADs According to the third and sixth clauses. 2. Floor plans layout and furniture plans are for indicative purposes. 3. Please refer to the inventory list, CADs and actual constructed units for areas and areas details. Rendered areas details are based on averages and may vary per unit. 4. Diagrams are not to scale. 5. Room dimensions are consistent with structural elements and do not include wall finishes or additional construction. 6. Exact specifications and details vary between each unit. For exact technical details, please refer to the contract. 7. Reserving the right to make minor alterations to the drawings added or deducted from areas & values According to the third and sixth clauses.

TYPE 15

Area – 178m²
3 BEDROOMS

1.	Reception & Dining Room	7.07 x 3.95
2.	Master Bedroom	4.30 x 3.35
3.	Bedroom 1	4.07 x 3.55
4.	Bedroom 2	5.57 x 3.80
5.	Kitchen	2.97 x 3.95
6.	Guest Bathroom	2.22 x 1.14
7.	Bathroom	2.22 x 1.82
8.	Master Bedroom Bathroom	2.22 x 1.84
9.	Corridor	1.00 x 5.16
10.	Terrace 1	3.95 x 1.95
11.	Terrace 2	3.55 x 1.38
12.	Terrace 3	1.75 x 1.50
13.	Terrace 4	1.00 x 1.50



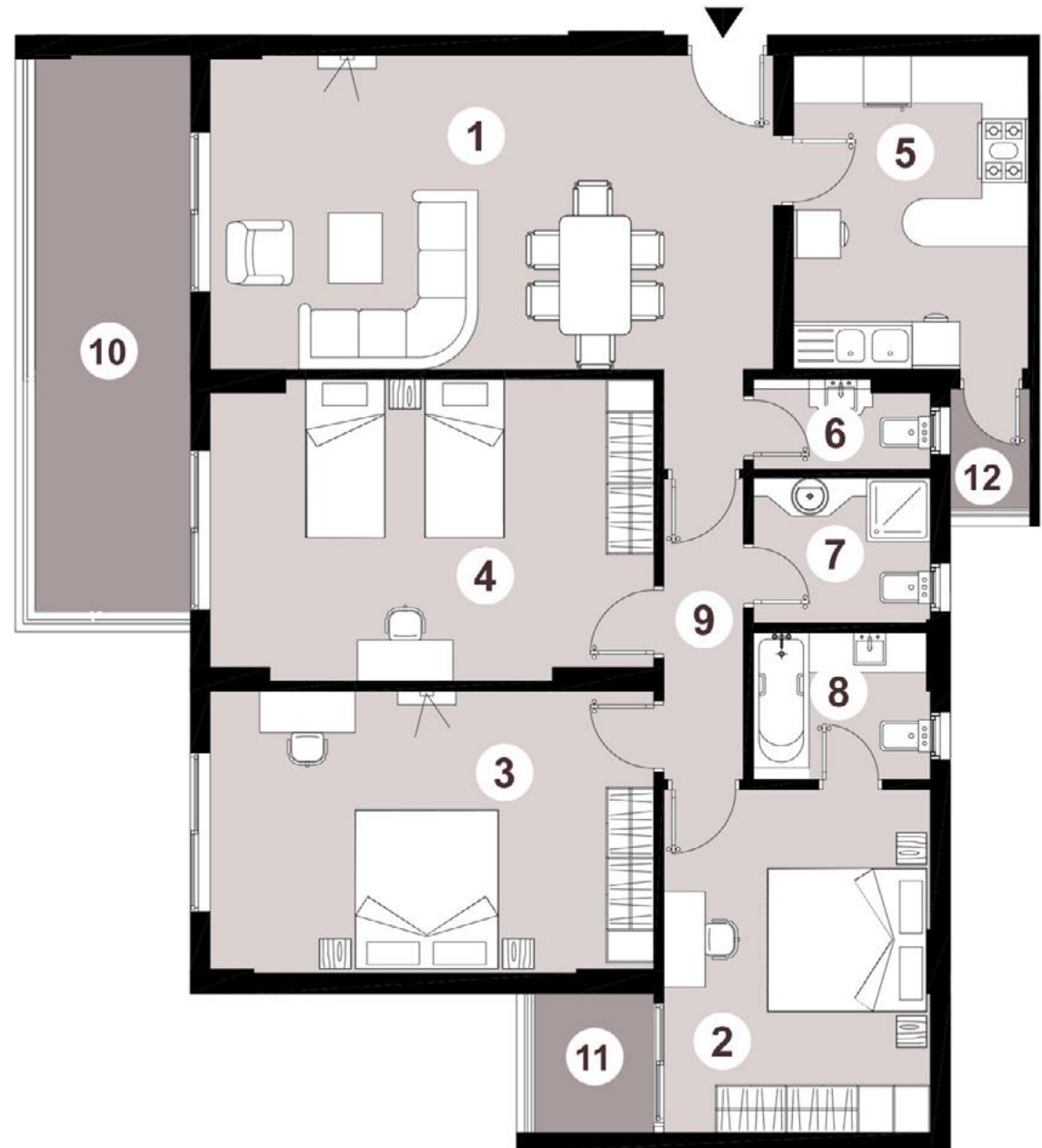
Disclaimer.

1. These renders are for illustrative purposes only. Minor changes are applicable as per actual Master planning design, construction, constructed units and to the CADs. Please refer to the site and to the CADs According to the third and sixth clauses. 2. Floor plans layout and furniture plans are for indicative purposes. 3. Please refer to the inventory list, CADs and actual constructed units for areas and areas details. Rendered areas details are based on averages and may vary per unit. 4. Diagrams are not to scale. 5. Room dimensions are consistent with structural elements and do not include wall finishes or additional construction. 6. Exact specifications and details vary between each unit. For exact technical details, please refer to the contract. 7. Reserving the right to make minor alterations to the drawings added or deducted from areas& values According to the third and sixth clauses.

TYPE 16

Area – 187m²
3 BEDROOMS

1.	Reception & Dining Room	7.07 x 3.95
2.	Master Bedroom	3.35 x 4.30
3.	Bedroom 1	3.50 x 5.50
4.	Bedroom 2	5.57 x 3.80
5.	Kitchen	2.97 x 3.95
6.	Guest Bathroom	2.22 x 1.14
7.	Bathroom	2.22 x 1.82
8.	Master Bedroom Bathroom	2.22 x 1.84
9.	Corridor	1.00 x 5.16
10.	Terrace 1	7.00 x 1.95
11.	Terrace 2	1.75 x 1.50
12.	Terrace 3	1.00 x 1.50



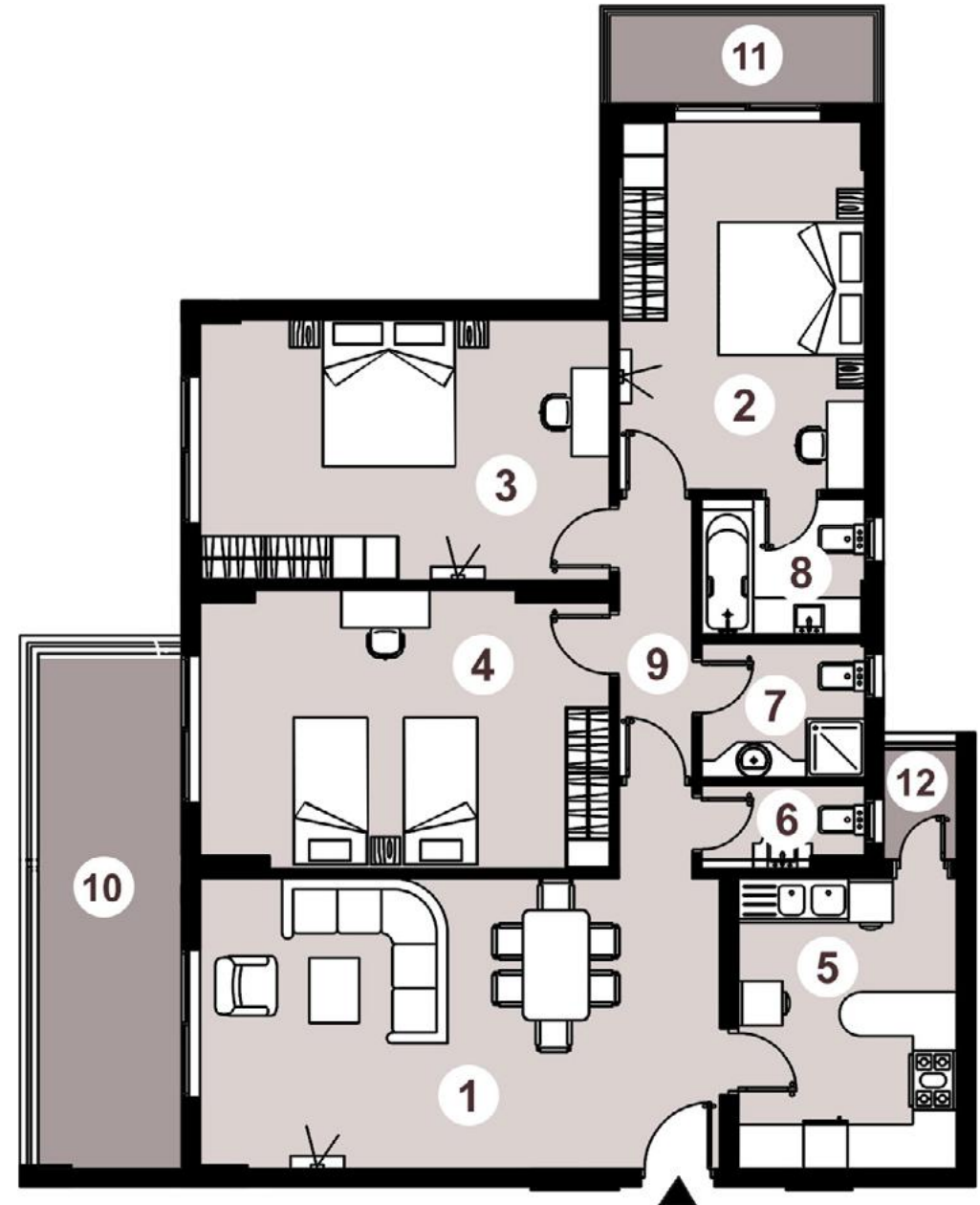
Disclaimer.

1. These renders are for illustrative purposes only. Minor changes are applicable as per actual Master planning design, construction, constructed units and to the CADs. Please refer to the site and to the CADs According to the third and sixth clauses. 2. Floor plans layout and furniture plans are for indicative purposes. 3. Please refer to the inventory list, CADs and actual constructed units for areas and areas details. Rendered areas details are based on averages and may vary per unit. 4. Diagrams are not to scale. 5. Room dimensions are consistent with structural elements and do not include wall finishes or additional construction. 6. Exact specifications and details vary between each unit. For exact technical details, please refer to the contract. 7. Reserving the right to make minor alterations to the drawings added or deducted from areas& values According to the third and sixth clauses.

TYPE 17

Area – 193m²
3 BEDROOMS

1.	Reception & Dining Room	7.07 x 3.95
2.	Master Bedroom	5.00 x 3.35
3.	Bedroom 1	5.50 x 3.50
4.	Bedroom 2	5.57 x 3.80
5.	Kitchen	2.97 x 3.95
6.	Guest Bathroom	2.22 x 1.14
7.	Bathroom	2.22 x 1.82
8.	Master Bedroom Bathroom	2.22 x 1.84
9.	Corridor	1.00 x 5.16
10.	Terrace 1	7.00 x 1.95
11.	Terrace 2	1.20 x 3.60
12.	Terrace 3	1.00 x 1.50



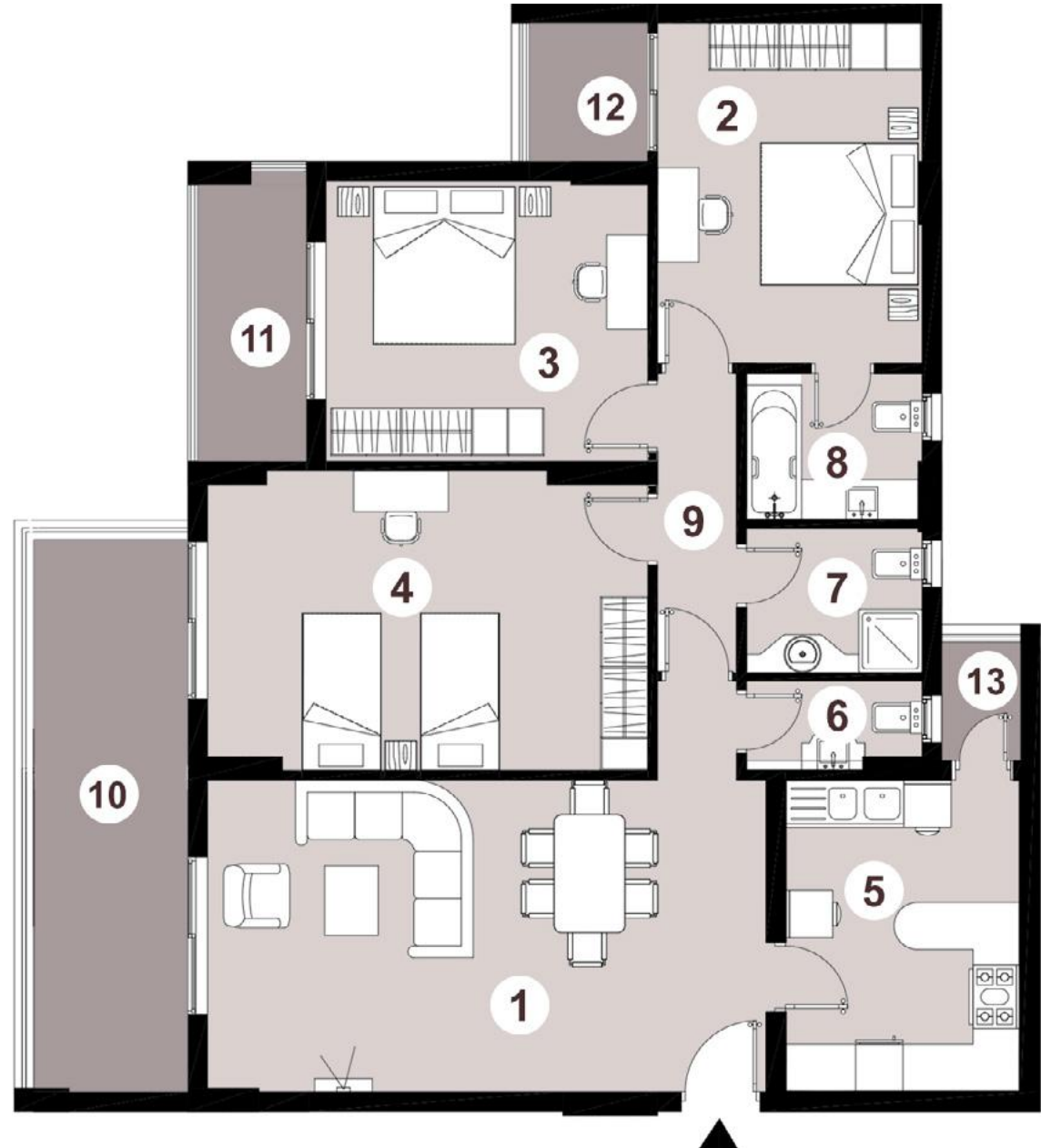
Disclaimer.

1. These renders are for illustrative purposes only. Minor changes are applicable as per actual Master planning design, construction, constructed units and to the CADs. Please refer to the site and to the CADs According to the third and sixth clauses. 2. Floor plans layout and furniture plans are for indicative purposes. 3. Please refer to the inventory list, CADs and actual constructed units for areas and areas details. Rendered areas details are based on averages and may vary per unit. 4. Diagrams are not to scale. 5. Room dimensions are consistent with structural elements and do not include wall finishes or additional construction. 6. Exact specifications and details vary between each unit. For exact technical details, please refer to the contract. 7. Reserving the right to make minor alterations to the drawings added or deducted from areas & values According to the third and sixth clauses.

TYPE 19

Area – 188m²
3 BEDROOMS

1.	Reception & Dining Room	7.07 x 3.95
2.	Master Bedroom	4.30 x 3.35
3.	Bedroom 1	4.07 x 3.55
4.	Bedroom 2	5.57 x 3.80
5.	Kitchen	2.97 x 3.95
6.	Guest Bathroom	2.22 x 1.14
7.	Bathroom	2.22 x 1.82
8.	Master Bedroom Bathroom	2.22 x 1.84
9.	Corridor	1.00 x 5.16
10.	Terrace 1	7.00 X 1.95
11.	Terrace 2	3.55 x 1.38
12.	Terrace 3	1.75 x 1.50
13.	Terrace 4	1.00 x 1.50



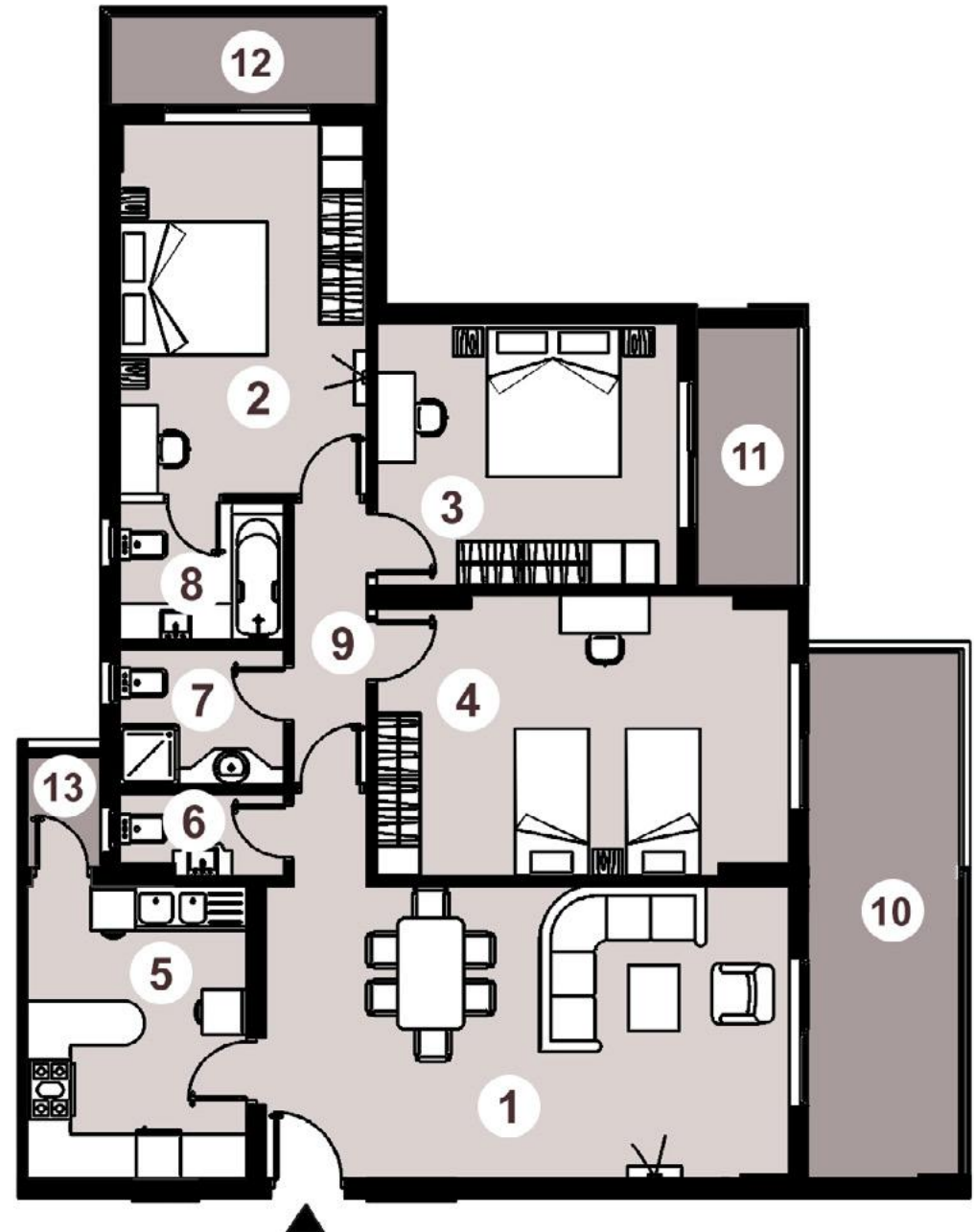
Disclaimer.

1. These renders are for illustrative purposes only. Minor changes are applicable as per actual Master planning design, construction, constructed units and to the CADs. Please refer to the site and to the CADs According to the third and sixth clauses. 2. Floor plans layout and furniture plans are for indicative purposes. 3. Please refer to the inventory list, CADs and actual constructed units for areas and areas details. Rendered areas details are based on averages and may vary per unit. 4. Diagrams are not to scale. 5. Room dimensions are consistent with structural elements and do not include wall finishes or additional construction. 6. Exact specifications and details vary between each unit. For exact technical details, please refer to the contract. 7. Reserving the right to make minor alterations to the drawings added or deducted from areas& values According to the third and sixth clauses.

TYPE 21

Area – 193m²
3 BEDROOMS

1.	Reception & Dining Room	7.07 x 3.95
2.	Master Bedroom	4.30 x 3.35
3.	Bedroom 1	4.07 x 3.55
4.	Bedroom 2	5.57 x 3.80
5.	Kitchen	2.97 x 3.95
6.	Guest Bathroom	2.22 x 1.14
7.	Bathroom	2.22 x 1.82
8.	Master Bedroom Bathroom	2.22 x 1.84
9.	Corridor	1.00 x 5.16
10.	Terrace 1	7.00 X 1.95
11.	Terrace 2	3.55 x 1.38
12.	Terrace 3	3.60 x 1.20
13.	Terrace 4	1.00 x 1.50



Disclaimer.

1. These renders are for illustrative purposes only. Minor changes are applicable as per actual Master planning design, construction, constructed units and to the CADs. Please refer to the site and to the CADs According to the third and sixth clauses. 2. Floor plans layout and furniture plans are for indicative purposes. 3. Please refer to the inventory list, CADs and actual constructed units for areas and areas details. Rendered areas details are based on averages and may vary per unit. 4. Diagrams are not to scale. 5. Room dimensions are consistent with structural elements and do not include wall finishes or additional construction. 6. Exact specifications and details vary between each unit. For exact technical details, please refer to the contract. 7. Reserving the right to make minor alterations to the drawings added or deducted from areas & values According to the third and sixth clauses.

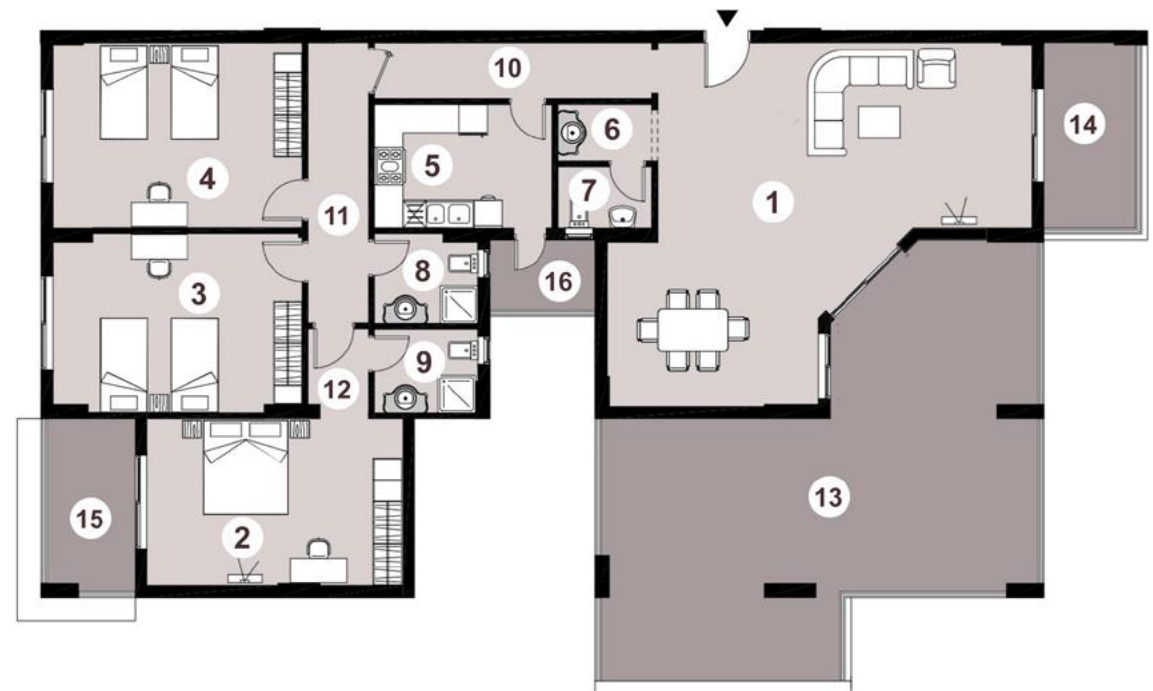
TYPE

25 - PENTHOUSE UNIT

Area – 322m²

3 BEDROOMS

1.	Reception & Dining Room	7.75 x 9.05
2.	Master Bedroom	5.44 x 3.55
3.	Bedroom 1	5.31 x 3.80
4.	Bedroom 2	3.94 x 5.31
5.	Kitchen	2.63 x 3.61
6.	Corridor	2.00 x 1.20
7.	Guest Bathroom	2.00 x 1.31
8.	Bathroom	1.91 x 2.20
9.	Master Bedroom Bathroom	1.78 x 2.20
10.	Corridor 1	5.90 x 1.20
11.	Corridor 2	5.96 x 1.20
12.	Corridor 3	1.91 x 1.30
13.	Terrace 1	9.29 x 7.47
14.	Terrace 2	1.95 x 3.95
15.	Terrace 3	3.67 x 1.87
16.	Terrace 4	2.25 x 1.50



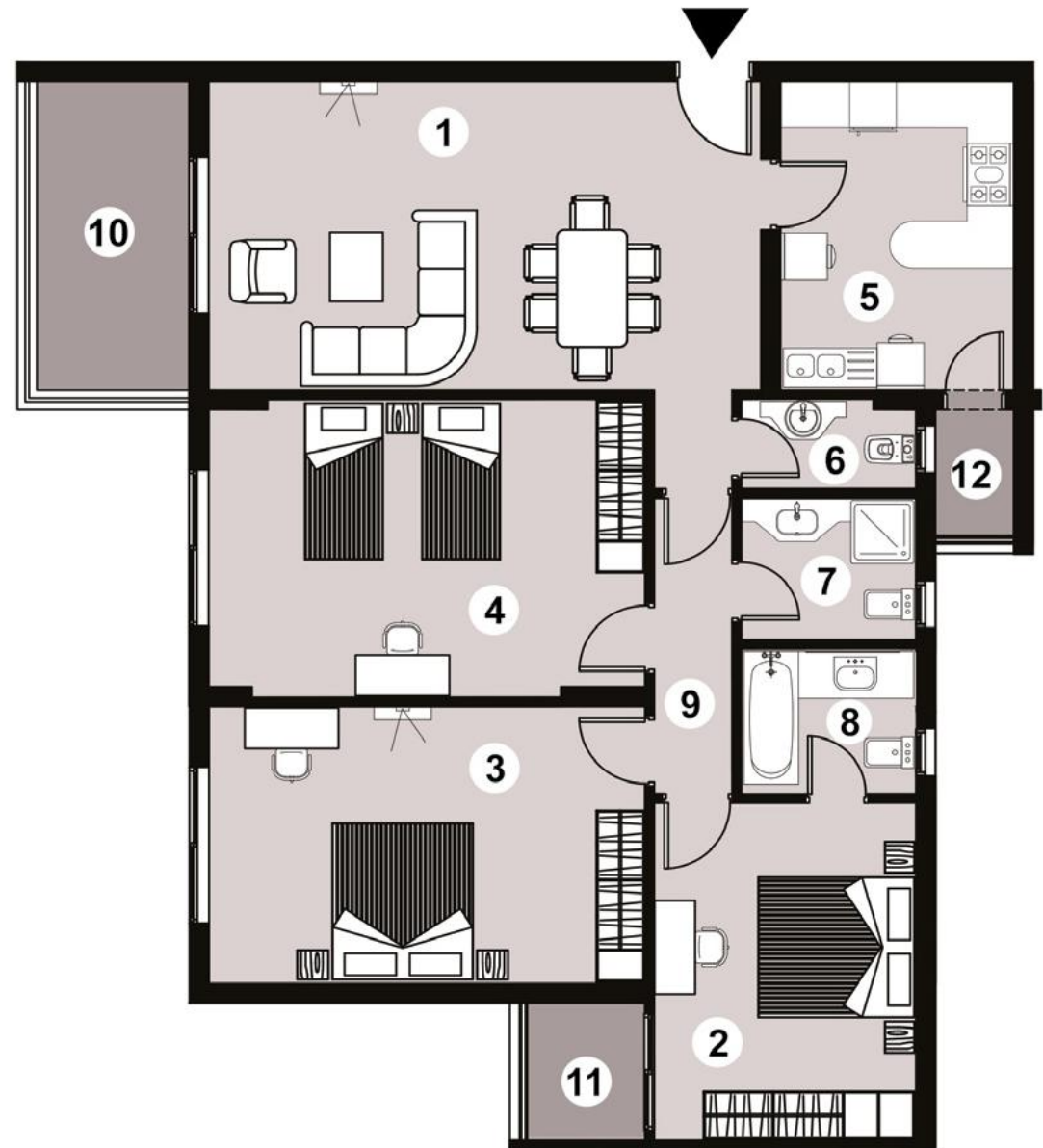
Disclaimer.

1. These renders are for illustrative purposes only. Minor changes are applicable as per actual Master planning design, construction, constructed units and to the CADs. Please refer to the site and to the CADs According to the third and sixth clauses. 2. Floor plans layout and furniture plans are for indicative purposes. 3. Please refer to the inventory list, CADs and actual constructed units for areas and areas details. Rendered areas details are based on averages and may vary per unit. 4. Diagrams are not to scale. 5. Room dimensions are consistent with structural elements and do not include wall finishes or additional construction. 6. Exact specifications and details vary between each unit. For exact technical details, please refer to the contract. 7. Reserving the right to make minor alterations to the drawings added or deducted from areas & values According to the third and sixth clauses.

TYPE 28

Area – 178m²
3 BEDROOMS

1.	Reception & Dining	7.07 x 3.95
2.	Master Bedroom	4.31 x 3.35
3.	Bedroom 1	5.58 x 3.55
4.	Bedroom 2	5.58 x 3.81
5.	Kitchen	3.95 x 2.98
6.	Guest Bathroom	2.23 x 1.15
7.	Bathroom	2.23 x 1.81
8.	Master Bedroom Bathroom	2.40 x 2.24
9.	Corridor	5.17 x 1.00
10.	Terrace 1	3.95 x 1.96
11.	Terrace 2	1.75 x 1.50
12.	Terrace 3	1.00 x 1.50



Disclaimer.

1. These renders are for illustrative purposes only. Minor changes are applicable as per actual Master planning design, construction, constructed units and to the CADs. Please refer to the site and to the CADs According to the third and sixth clauses. 2. Floor plans layout and furniture plans are for indicative purposes. 3. Please refer to the inventory list, CADs and actual constructed units for areas and areas details. Rendered areas details are based on averages and may vary per unit. 4. Diagrams are not to scale. 5. Room dimensions are consistent with structural elements and do not include wall finishes or additional construction. 6. Exact specifications and details vary between each unit. For exact technical details, please refer to the contract. 7. Reserving the right to make minor alterations to the drawings added or deducted from areas& values According to the third and sixth clauses.

4 BEDROOMS

TYPE

24 - PENTHOUSE UNIT

Area – 330m²

4 BEDROOMS

1.	Reception & Dining Room	7.75 x 9.05
2.	Master Bedroom	4.91 x 3.35
3.	Bedroom 1	4.08 x 3.54
4.	Bedroom 2	5.57 x 3.79
5.	Bedroom 3	3.95 x 5.57
6.	Kitchen	2.63 x 3.61
7.	Corridor	2.00 x 1.20
8.	Guest Bathroom	2.00 x 1.31
9.	Bathroom	2.03 x 2.30
10.	Master Bedroom Bathroom	2.03 x 2.70
11.	Corridor 1	5.85 x 1.20
12.	Corridor 2	8.00 x 1.20
13.	Terrace 1	7.57 x 7.46
14.	Terrace 2	1.95 x 3.95
15.	Terrace 3	1.25 x 3.54
16.	Terrace 4	3.60 x 1.20
17.	Terrace 5	2.25 x 1.50



Disclaimer.

1. These renders are for illustrative purposes only. Minor changes are applicable as per actual Master planning design, construction, constructed units and to the CADs. Please refer to the site and to the CADs According to the third and sixth clauses. 2. Floor plans layout and furniture plans are for indicative purposes. 3. Please refer to the inventory list, CADs and actual constructed units for areas and areas details. Rendered areas details are based on averages and may vary per unit. 4. Diagrams are not to scale. 5. Room dimensions are consistent with structural elements and do not include wall finishes or additional construction. 6. Exact specifications and details vary between each unit. For exact technical details, please refer to the contract. 7. Reserving the right to make minor alterations to the drawings added or deducted from areas& values According to the third and sixth clauses.

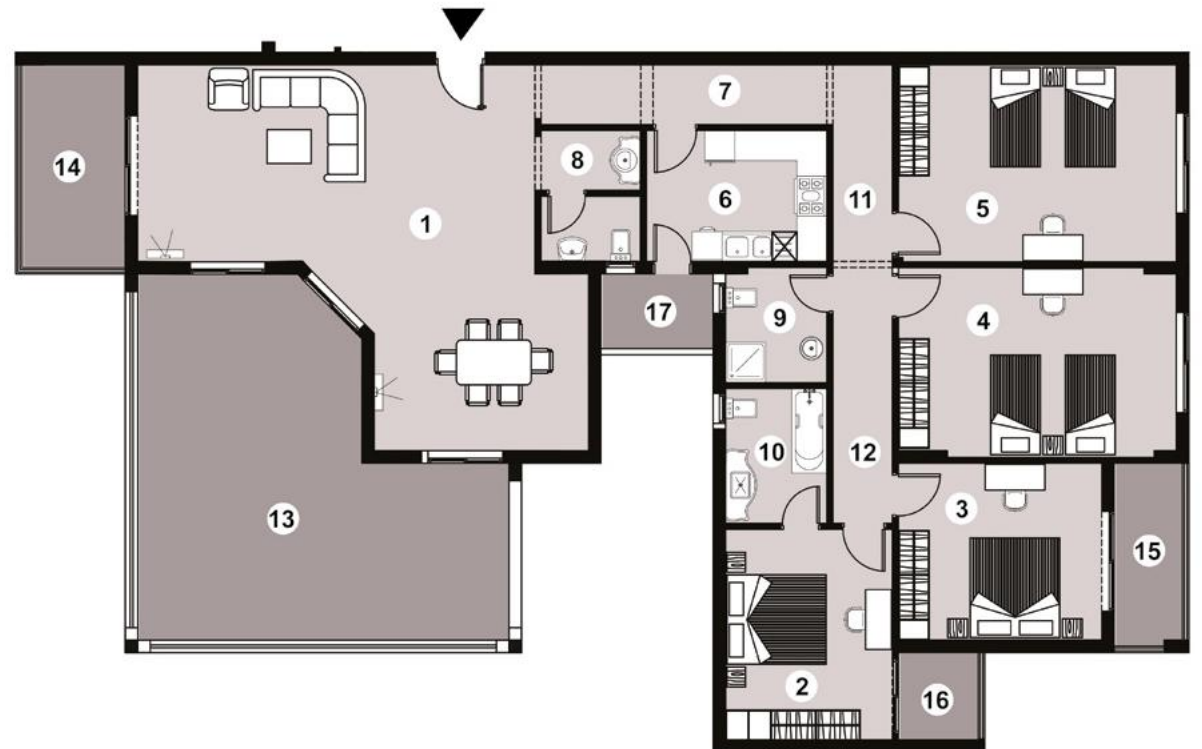
TYPE

26 - PENTHOUSE UNIT

Area – 322m²

4 BEDROOMS

1.	Reception & Dining	7.75 x 9.04
2.	Master Bedroom	4.22 x 3.35
3.	Bedroom 1	4.08 x 3.55
4.	Bedroom 2	5.58 x 3.80
5.	Bedroom 3	5.58 x 3.95
6.	Kitchen	3.62 x 2.63
7.	Corridor	2.00 x 1.20
8.	Guest Bathroom	2.00 x 1.30
9.	Bathroom	2.31 x 2.03
10.	Master Bedroom Bathroom	2.70 x 2.03
11.	Corridor 1	5.85 x 1.20
12.	Corridor 2	8.00 x 1.19
13.	Terrace 1	7.57 x 7.46
14.	Terrace 2	1.95 x 3.95
15.	Terrace 3	1.25 x 3.54
16.	Terrace 4	1.75 x 1.50
17.	Terrace 5	2.25 x 1.50



Disclaimer.

1. These renders are for illustrative purposes only. Minor changes are applicable as per actual Master planning design, construction, constructed units and to the CADs. Please refer to the site and to the CADs According to the third and sixth clauses. 2. Floor plans layout and furniture plans are for indicative purposes. 3. Please refer to the inventory list, CADs and actual constructed units for areas and areas details. Rendered areas details are based on averages and may vary per unit. 4. Diagrams are not to scale. 5. Room dimensions are consistent with structural elements and do not include wall finishes or additional construction. 6. Exact specifications and details vary between each unit. For exact technical details, please refer to the contract. 7. Reserving the right to make minor alterations to the drawings added or deducted from areas& values According to the third and sixth clauses.

RESIDENTIAL
AMENITIES &
FINISHING SPECS



FINISHING SPECS

INTERIOR FINISHING

ITEM
Ceramic

ITEM
Acrylic paint

AREA OF USE
Flooring

AREA OF USE
Walls
Ceiling

SPACE
Reception
Bedrooms
Terrace

SPACE
Reception
Bedrooms

EXTERIOR FINISHING

ITEM
Paint

ITEM
Glass

ITEM
Metal Handrails

AREA OF USE
Elevation

AREA OF USE
Elevation

AREA OF USE
Terraces

Disclaimer.

1. These renders are for illustrative purposes only; Minor changes are applicable as per actual Master planning design, construction, constructed units and to the CADs. Please refer to the site and to the CADs According to the third and sixth clauses. 2. Floor plans layout and furniture plans are for indicative purposes. 3. Please refer to the inventory list, CADs and actual constructed units for areas and areas details. Rendered areas details are based on averages and may vary per unit. 4. Diagrams are not to scale. 5. Room dimensions are consistent with structural elements and do not include wall finishes or additional construction. 6. Exact specifications and details vary between each unit. For exact technical details, please refer to the contract. 7. Reserving the right to make minor alterations to the drawings added or deducted from areas& values According to the third and sixth clauses.

GENERAL SPECS

Public Areas

Residential Unit

Indoor Parking Areas

CENTRAL HVAC SYSTEMS

Split units air conditioning piping connections only (Electric & Drainage)

✓

FRESH AIR SUPPLY

Continuous fresh air supply independent from the AC operation, ensuring quality of indoor fresh air

✓

EXHAUST SYSTEMS

Parking Ventilation System

✓

OUTDOOR SWIMMING POOLS

Outdoor swimming pool features

✓

COMMUNICATION AND SECURITY

Structured Data Cabling and LAN Switching

✓

✓

✓

LAN Network

✓

High speed internet access

✓

IP Telephony

✓

IP-CCTV

✓

✓

Audio Visual Intercom

✓

Public Address Sound System

✓

✓

FIRE ALARM SYSTEM

Intelligent Digital Addressable Main Fire Control Panel (MFACP)

✓

✓

The Fire Alarm with Automatic Telephone Dialer (ATD) which sends an alarm signal to the Fire Brigade in case of fire

✓

✓

Manual pull stations installed in all project areas

✓

✓

Heat detectors transformer rooms, emergency generator rooms, etc.

✓

✓

High sensitivity smoke detectors

✓

✓

Fire Fighting System

✓

✓

Water Sprinkler System

✓

✓

Fire Hose Reel

✓

✓

Chemicals Systems (FM200, CO2, etc.)

✓

Disclaimer.

1. These renders are for illustrative purposes only; Minor changes are applicable as per actual Master planning design, construction, constructed units and to the CADs. Please refer to the site and to the CADs According to the third and sixth clauses. 2. Floor plans layout and furniture plans are for indicative purposes. 3. Please refer to the inventory list, CADs and actual constructed units for areas and areas details. Rendered areas details are based on averages and may vary per unit. 4. Diagrams are not to scale. 5. Room dimensions are consistent with structural elements and do not include wall finishes or additional construction. 6. Exact specifications and details vary between each unit. For exact technical details, please refer to the contract. 7. Reserving the right to make minor alterations to the drawings added or deducted from areas & values According to the third and sixth clauses.

GENERAL SPECS

Public Areas

Residential Unit

Indoor Parking Areas

ELECTRICAL LV SAFETY SYSTEMS

Earth leakage circuit breaker for wet areas	✓	✓	✓
Lightening and Grounding network	✓	✓	✓
Redundant transformers for all main loads		✓	✓
Emergency backup generator for life safety & security systems		✓	✓
LED lighting for lower power consumption		✓	✓

ELEVATORS

Each building will be equipped with 2 passenger elevator for residential units		✓	✓
--	--	---	---

OTHERS AMENITIES

BMS - Building Management System			✓
Garbage Chute system with safety features (door lock & firefighting)	✓	✓	✓
Grey Water Management System	✓	✓	✓

Disclaimer.

1. These renders are for illustrative purposes only; Minor changes are applicable as per actual Master planning design, construction, constructed units and to the CADs. Please refer to the site and to the CADs According to the third and sixth clauses. 2. Floor plans layout and furniture plans are for indicative purposes. 3. Please refer to the inventory list, CADs and actual constructed units for areas and areas details. Rendered areas details are based on averages and may vary per unit. 4. Diagrams are not to scale. 5. Room dimensions are consistent with structural elements and do not include wall finishes or additional construction. 6. Exact specifications and details vary between each unit. For exact technical details, please refer to the contract. 7. Reserving the right to make minor alterations to the drawings added or deducted from areas& values According to the third and sixth clauses.



CITY EDGE
DEVELOPMENTS